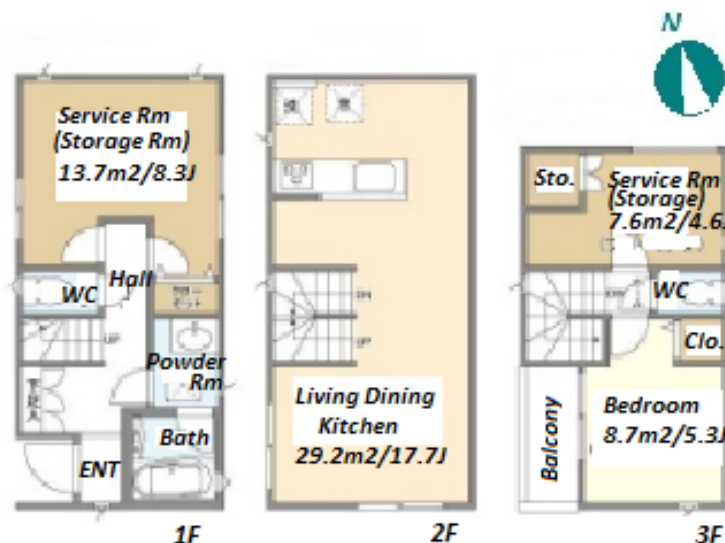
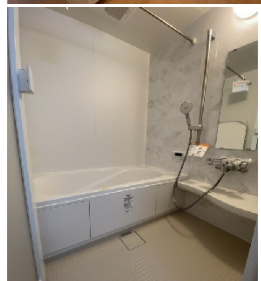


Property Name	KOLET CHOFU-TAMAGAWA #04	Unit No.	TYPE	Access	Keioutamagawa Station on (13 min)
			House		
Address	2-19-36, Tamagawa, Chofu-Shi, Tokyo				



## Lease Conditions

LAYOUT	2 BR+S
SIZE	85.08 m²/915.79 ft²
RENT	JPY 201,000 / month

Management Fee	-	
Deposit	2 months	Key Money -
Lease Term	Standard lease for 24 months	
Available	Now	
Renewal Fee	1 month	
Agent Fee	1 month + tax	
Other Info	Guarantor Company : TBC / No Key Money / Free rent / Air-Con / Separated Toilet / Balcony / Internet (Extra Charge) / Penalty Fee for Early Cancellation / Musical Instrument Negotiable / Flooring / Floor Heating / Dishwasher / 2 Toilets	

## Building Information

Completion	Aug, 2022	Earthquake Resistance	New
Structure	Wooden, 3 story		
Car Parking	for 1 space ( Included )		
Bicycle Parking	-		
Music Instrument	Negotiable	Pet	
Facilities	House / Delivery box / Newly-built (~7 y/o)		

## Remarks

Renters Insurance : Required / Pet:additional deposit ( 1 month )

\*The actual Layout & Size may differ slightly from this floor plans & pictures.



HOUSE REP TOKYO INC.

ハウスレップトーキョー株式会社

#301, 1-4-15, Hiroo, Shibuya-ku, Tokyo 150-0012, Japan

+81 (0)3 6427 5860

inquiry@houserep-tokyo.com

Transaction Type : Intermediate

Agent Fee : 1 month + tax

Website : www.houserep-tokyo.com

