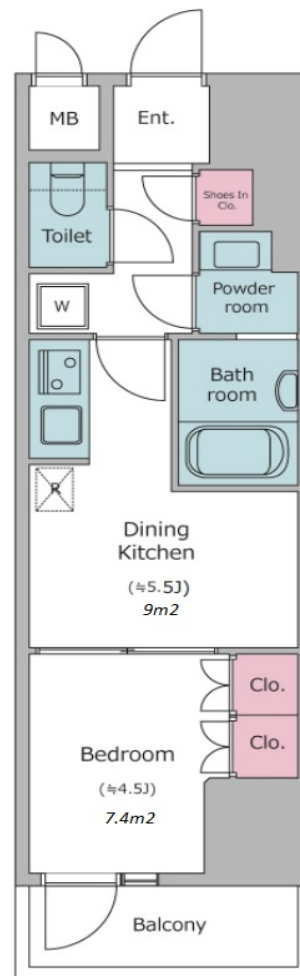
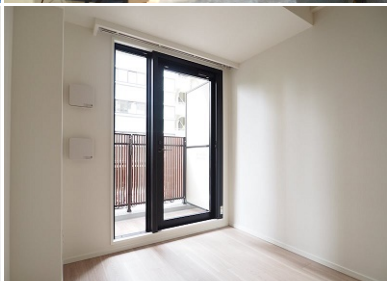
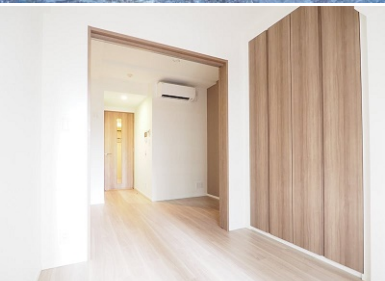


Property Name	RESIDIA NAKAMEGURO III	Unit No.	TYPE	Access	Nakameguro Station on Toyoko Line (13 min) Ebisu Station on JR Yamanote Line (16 min)
		802	Apt.		
Address	2-7-7, Nakameguro, Meguro-Ku, Tokyo				

## New Mid Rise Apt in Nakameguro



\*The actual Layout & Size may differ slightly from this floor plans & pictures.

Lease Conditions	
LAYOUT	1 BR
SIZE	27.43 m <sup>2</sup> /295.25 ft <sup>2</sup>
RENT	JPY 170,000 / month
Management Fee	JPY10,000/month
Deposit	2 months
Key Money	1 month
Lease Term	Standard lease for 24 months
Available	Now
Renewal Fee	1 month
Agent Fee	1 month + tax
Other Info	Key Replacement Fee : JPY20,000 Tax not included / Guarantor Company : TBC / Auto lock / Air-Con / Separated Toilet / Balcony / Internet (Extra Charge) / Flooring / Bathroom dryer

Building Information	
Completion	Jun, 2022
Earthquake Resistance	New
Structure	RC, 15 floors above
Car Parking	TBC
Bicycle Parking	( Included )
Music Instrument	-
Pet	Allowed
Facilities	Motorcycle Parking (TBC) / Near Large Parks / Delivery box / Elevator / High-rise

Remarks
Renters Insurance : Required / i-Life(including Internet fee): JPY.2,500+tax/month / Bicycle parking : Registration fee: 3,300yen / Pet:additional deposit ( 1 month ) / Pet : a small dog or a cat



HOUSEREP TOKYO INC.

ハウズレップトーキョー株式会社

#301, 1-4-15, Hiroo, Shibuya-ku, Tokyo 150-0012, Japan

+81 (0)3 6427 5860

inquiry@housserrep-tokyo.com

Transaction Type : Intermediate

Agent Fee : 1 month + tax

Website : www.housserrep-tokyo.com

