

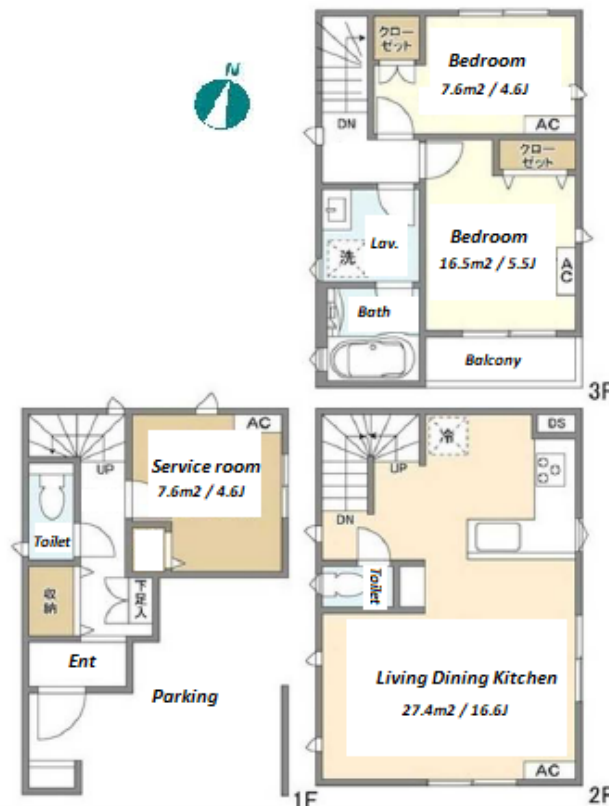
FOR RENT

Property ID No. :146824

HOUSEREP TOKYO INC.

Website : www.housserep-tokyo.com

Property Name	KOLET OJIMA	Unit No.	TYPE	Access	Nishioojima Station on Toei Shinjuku Line (6 min)
		4	House		
Address	7-11-15, Ojima, Koto-Ku, Tokyo				



## Lease Conditions

LAYOUT	2 BR+S		
SIZE	77 m <sup>2</sup> /828.82 ft <sup>2</sup>		
RENT	JPY 264,000 / month		
Management Fee	-		
Deposit	2 months	Key Money	1 month
Lease Term	Standard lease for 24 months		
Available	Now		
Renewal Fee	1 month		
Agent Fee	1 month + tax		
Other Info	Air-Con / Separated Toilet / Loft/Maisonnette / Penalty Fee for Early Cancellation / Musical Instrument Negotiable / Flooring / Bathroom dryer / 2 Toilets		

## Building Information

Completion	Oct, 2022	Earthquake Resistance	New
Structure	Wooden, 3 story		
Car Parking	( Included )		
Bicycle Parking	-		
Music Instrument	Negotiable	Pet	
Facilities	House / Delivery box / Newly-built (~1 y/o)		

## Remarks

Renters Insurance : Required / Pet:additional deposit ( 1 month )

\*The actual Layout &amp; Size may differ slightly from this floor plans &amp; pictures.



HOUSEREP TOKYO INC.

ハウスレプトーキョー株式会社

#301, 1-4-15, Hiroo, Shibuya-ku, Tokyo 150-0012, Japan

+81 (0)3 6427 5860 inquiry@housserep-tokyo.com

Transaction Type : Intermediate

Agent Fee : 1 month + tax

Website : www.housserep-tokyo.com

