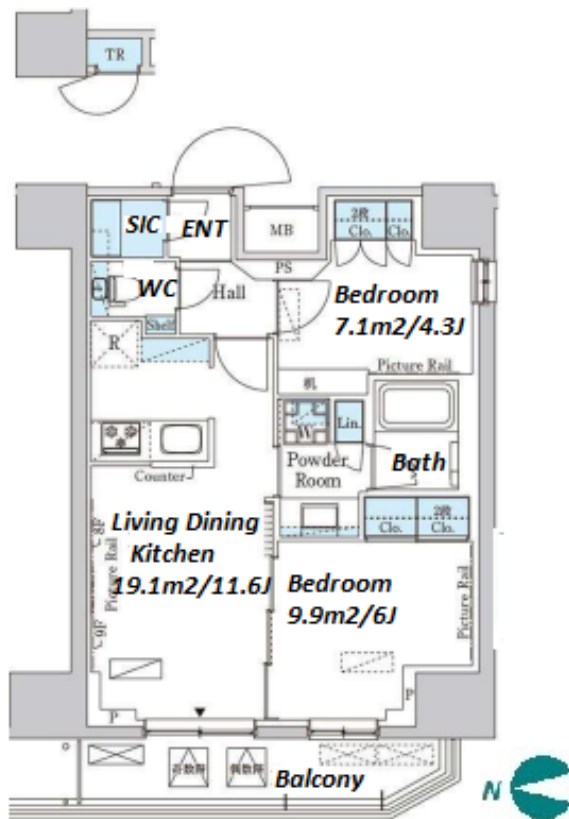


Property Name	PARK AXIS IRIYA	Unit No.	TYPE	Access	Iriya Station on Hibiya Line (5 min)
		801	Apt.		
Address	2-38-4, Iriya, Taito-Ku, Tokyo				

Mid-rise Apt. in Iriya, near ueno



\*The actual Layout & Size may differ slightly from this floor plans & pictures.

Lease Conditions			
LAYOUT	2 BR		
SIZE	51.76 m²/557.13 ft²		
RENT	JPY 223,000 / month		
Management Fee	JPY20,000/month		
Deposit	2 months	Key Money	-
Lease Term	Standard lease for 24 months		
Available	Now		
Renewal Fee	1 month		
Agent Fee	1 month + tax		
Other Info	Key Replacement Fee : JPY25,000 Tax not included / Guarantor Company : TBC / No Key Money / Auto lock / Air-Con / Separated Toilet / Balcony / Penalty Fee for Early Cancellation / Musical Instrument Negotiable / CS/CATV / Flooring / Bathroom dryer		

Building Information			
Completion	Mar, 2022	Earthquake Resistance	New
Structure	RC, 14 story		
Car Parking	N/A		
Bicycle Parking	for 1 space ( Included )		
Music Instrument	Negotiable	Pet	Allowed
Facilities	Motorcycle Parking (TBC) / Janitor / Delivery box / Elevator / Close to Station / Newly-built (~1 y/o)		

Remarks
Renters Insurance : Required / Bicycle parking : Registration fee:JPY.2,000+tax / Pet:additional deposit ( 1 month ) / Pet : a small dog or a cat



HOUSE REP TOKYO INC.

ハウズレップトーキョー株式会社

#301, 1-4-15, Hiroo, Shibuya-ku, Tokyo 150-0012, Japan

+81 (0)3 6427 5860 inquiry@housserep-tokyo.com

Transaction Type : Intermediate

Agent Fee : 1 month + tax

Website : www.housserep-tokyo.com

