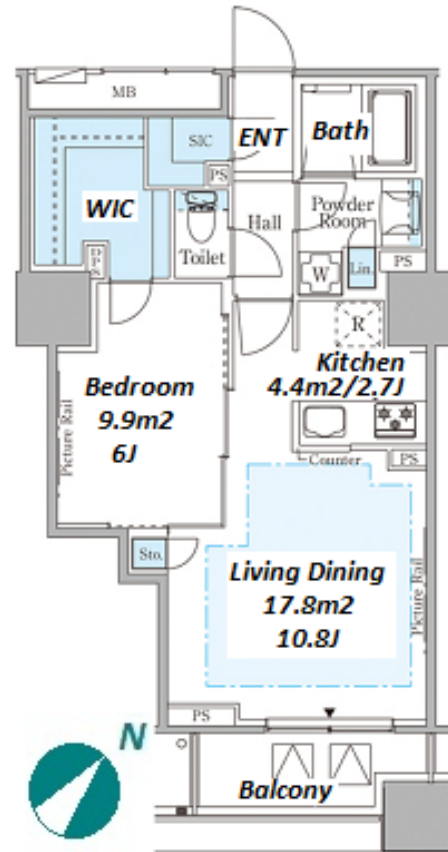


Property Name	RUBIA AKASAKA	Unit No.	TYPE	Access	Akasakamitsuke Station on Ginza Line (7 min) Nagatachou Station on Namboku Line (12 min)
		902	Apt.		
Address	4-9-11, Akasaka, Minato-Ku, Tokyo				

Modern Mid-rise Apt. in Akasaka



Lease Conditions			
LAYOUT	1 BR		
SIZE	50.02 m ² /538.41 ft ²		
RENT	JPY 252,000 / month		
Management Fee	JPY20,000/month		
Deposit	2 months	Key Money	2 months
Lease Term	Standard lease for 24 months		
Available	End, Jun, 2024		
Renewal Fee	1 month		
Agent Fee	1 month + tax		
Other Info	Key Replacement Fee : JPY20,000 Tax not included / Guarantor Company : TBC / Auto lock / Air-Con / Separated Toilet / Balcony / Penalty Fee for Early Cancellation / Flooring / Floor Heating / Bathroom dryer / WIC		

Building Information			
Completion	Aug, 2019	Earthquake Resistance	New
Structure	RC, 12 story		
Car Parking	TBC		
Bicycle Parking	for 1 space (Included)		
Music Instrument	-	Pet	-
Facilities	Motorcycle Parking (TBC) / Delivery box / Elevator		

Remarks
Renters Insurance : Required

*The actual Layout & Size may differ slightly from this floor plans & pictures.



HOUSEREP TOKYO INC.

ハウズレップトーキョー株式会社

#301, 1-4-15, Hiroo, Shibuya-ku, Tokyo 150-0012, Japan

+81 (0)3 6427 5860

inquiry@housserrep-tokyo.com

Transaction Type : Intermediate

Agent Fee : 1 month + tax

Website : www.housserrep-tokyo.com

