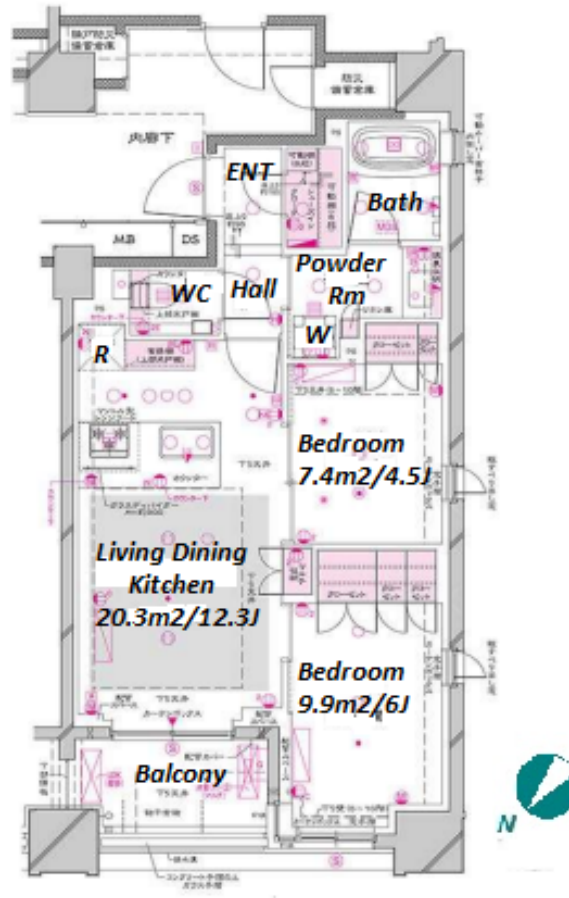


| | | | | | |
|---------------|---------------------------------|----------|------|--------|---|
| Property Name | OPUS RESIDENCE GINZA EAST | Unit No. | TYPE | Access | Shinntomichou Station on Yurakucho Line (7 min) |
| | | 1004 | Apt. | | |
| Address | 7-13-5, Tsukiji, Chuo-Ku, Tokyo | | | | |



*The actual Layout & Size may differ slightly from this floor plans & pictures.

| Lease Conditions | | |
|------------------|--|-------------|
| LAYOUT | 2 BR | |
| SIZE | 54.36 m²/585.12 ft² | |
| RENT | JPY 323,000 / month | |
| Management Fee | JPY15,000/month | |
| Deposit | 2 months | Key Money - |
| Lease Term | Standard lease for 24 months | |
| Available | Now | |
| Renewal Fee | 1 month | |
| Agent Fee | 1 month + tax | |
| Other Info | Key Replacement Fee : JPY20,000 Tax not included / Guarantor Company : TBC / No Key Money / Auto lock / Air-Con / Separated Toilet / Balcony / Internet (Extra Charge) / Penalty Fee for Early Cancellation / CS/CATV / Flooring / Floor Heating / Dishwasher / Bathroom dryer | |

| Building Information | | | |
|----------------------|--|-----------------------|---------|
| Completion | Jan, 2021 | Earthquake Resistance | New |
| Structure | RC, 12 story | | |
| Car Parking | N/A | | |
| Bicycle Parking | TBC | | |
| Music Instrument | - | Pet | Allowed |
| Facilities | Motorcycle Parking (TBC) / Within 20 min to Roppongi by train / Within 20 min to Tokyo station by car / Near Large Parks / Delivery box / Elevator | | |

| Remarks |
|--|
| Renters Insurance : Required / Pet:additional deposit (1 month) / Pet : a small dog or a cat |



HOUSE REP TOKYO INC.

ハウスレプトーキョー株式会社

#301, 1-4-15, Hiroo, Shibuya-ku, Tokyo 150-0012, Japan

+81 (0)3 6427 5860 inquiry@housserep-tokyo.com

Transaction Type : Intermediate

Agent Fee : 1 month + tax

Website : www.housserep-tokyo.com

