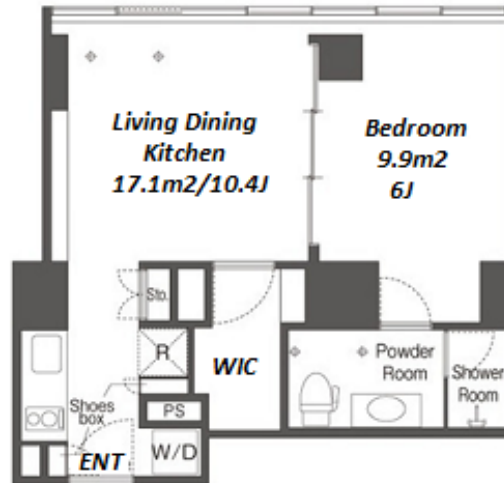


Property Name	WELLITH URBAN SHINAGAWA TOWER	Unit No.	TYPE	Access	Shinagawa Station on JR Yamanote Line (9 min) Shinagawa Station on JR Keihin Tohoku Line (9 min)
		2207	Apt.		
Address	4-1-6, Konan, Minato-Ku, Tokyo				

Modern Apt. in Shinagawa, Great View of Tokyo Bay



Lease Conditions	
LAYOUT	1 BR
SIZE	40.07 m ² /431.3 ft ²
RENT	JPY 213,000 / month
Management Fee	JPY12,000/month
Deposit	2 months
Key Money	-
Lease Term	Fixed term lease for 36 months
Available	Mid, Jun, 2024
Renewal Fee	-
Agent Fee	1 month + tax
Other Info	Key Replacement Fee : JPY20,000 Tax not included / Guarantor Company : TBC / No Key Money / Auto lock / Renovated / Fridge / Air-Con / Internet Included / Penalty Fee for Early Cancellation / Furnished / Curtain / Washer / Dryer / Dishwasher / Bathroom dryer

Building Information	
Completion	Nov, 2003
Earthquake Resistance	New
Structure	SRC, 24 floors above and 1 basement floors
Car Parking	TBC
Bicycle Parking	(Included)
Music Instrument	-
Pet	-
Facilities	Motorcycle Parking (TBC) / Gym ((Included)) / Within 20 min to Tokyo station by car / Near Large Parks / Front desk / Concierge / Delivery box / Elevator / Sky lounge

Remarks
Fixed term lease : Re-Contract fee : 1 month / Renters Insurance : Required

*The actual Layout & Size may differ slightly from this floor plans & pictures.



HOUSEREP TOKYO INC.

ハウスレップトーキョー株式会社

#301, 1-4-15, Hiroo, Shibuya-ku, Tokyo 150-0012, Japan

+81 (0)3 6427 5860

inquiry@housserep-tokyo.com

Transaction Type : Intermediate

Agent Fee : 1 month + tax

Website : www.housserep-tokyo.com

