

FOR RENT

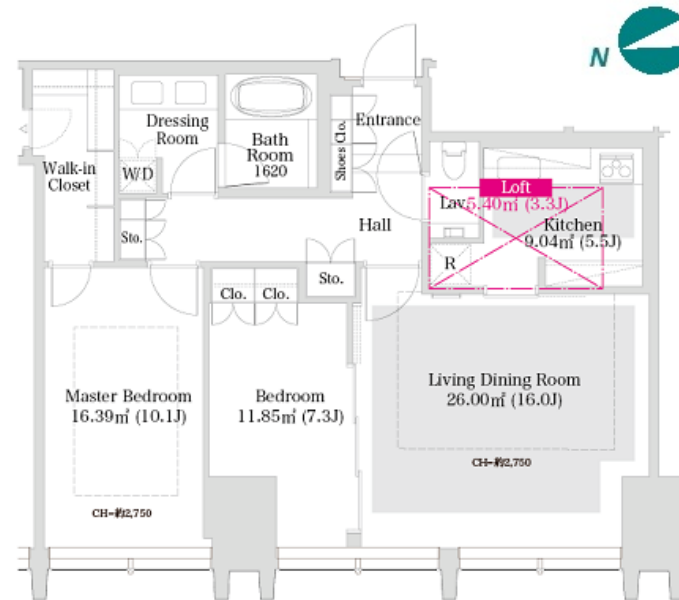
Property ID No. :142317

HOUSEREP TOKYO INC.

Website : www.housserep-tokyo.com

Property Name	LA TOUR SHINJUKU GRAND	Unit No.	TYPE	Access	Nishishinnjuku Station on Marunouchi Line (6 min) Tochoumae Station on Oedo Line (10 min) Shinnjuku Station on JR Yamanote Line (15 min)
		3702	Apt.		
Address	8-17-2, Nishishinjuku, Shinjuku-Ku, Tokyo				

Luxury Tower Residence in Nishi-Shinjuku, near Central Park



Lease Conditions			
LAYOUT	2 BR		
SIZE	90.43 m²/973.38 ft²		
RENT	JPY 690,000 / month		
Management Fee	-		
Deposit	2 months	Key Money	-
Lease Term	Fixed term lease for 36 months		
Available	Now		
Renewal Fee	-		
Agent Fee	1 month + tax		
Other Info	Depreciation : 1 month / No Key Money / Auto lock / Air-Con / Separated Toilet / Loft/Maisonnette / Internet Included / Penalty Fee for Early Cancellation / Nice Views / Flooring / Floor Heating / Bathroom dryer / WIC / High Ceiling (above 2.5m)		

Building Information			
Completion	Sep, 2011	Earthquake Resistance	New
Structure	RC, SRC, 40 story		
Car Parking	JPY40,000 ~ 60,000/ month		
Bicycle Parking	TBC		
Music Instrument	-	Pet	Allowed
Facilities	Motorcycle Parking (TBC) / Trunk Room (TBC) / Gym ((Included)) / Within 20 min walk to Roppongi / Within 20 min to Roppongi by train / Near Large Parks / Front desk / Concierge / Elevator / High-rise		

*The actual Layout & Size may differ slightly from this floor plans & pictures.



HOUSEREP TOKYO INC.

ハウスレップトーキョー株式会社

#301, 1-4-15, Hiroo, Shibuya-ku, Tokyo 150-0012, Japan

+81 (0)3 6427 5860 inquiry@housserep-tokyo.com

Transaction Type : Intermediate

Agent Fee : 1 month + tax

Website : www.housserep-tokyo.com



Remarks
Pet:additional deposit (1 month)