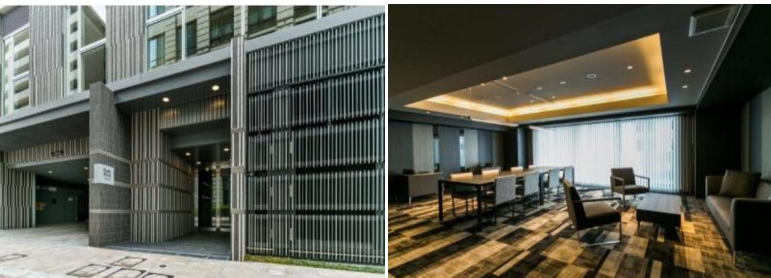


Property Name	PARK AXIS YOKOHAMA KANNAI SQUARE	Unit No.	TYPE	Access	Kannnai Station on JR Negishi Line (4 min)
		1114	Apt.		
Address	3-63-1, Aioicho, Naka-Ku, Yokohama-Shi, Kanagawa				

Modern stylish apt. in Kannai, Yokohama



\*The actual Layout & Size may differ slightly from this floor plans & pictures.

Lease Conditions			
LAYOUT	1 BR		
SIZE	36.71 m²/395.14 ft²		
RENT	JPY 176,000 / month		
Management Fee	JPY12,000/month		
Deposit	2 months	Key Money	1 month
Lease Term	Standard lease for 24 months		
Available	End, Apr, 2024		
Renewal Fee	1 month		
Agent Fee	1 month + tax		
Other Info	Guarantor Company : TBC / Auto lock / Air-Con / Separated Toilet / Balcony / Musical Instrument Negotiable / Flooring / Bathroom dryer		

Building Information			
Completion	Jun, 2016	Earthquake Resistance	New
Structure	RC, 15 story		
Car Parking	extra charge		
Bicycle Parking	TBC		
Music Instrument	Negotiable	Pet	Negotiable * a small dog or a cat
Facilities	Delivery box / Elevator		



HOUSEREP TOKYO INC.

ハウズレップトーキョー株式会社

#301, 1-4-15, Hiroo, Shibuya-ku, Tokyo 150-0012, Japan

+81 (0)3 6427 5860

inquiry@houserep-tokyo.com

Transaction Type : Intermediate

Agent Fee : 1 month + tax

Website : www.houserep-tokyo.com



Remarks
Key replacement: extra charge / Bicycle parking : Registration fee: JPY.1,000+tax / Pet : a small dog or a cat