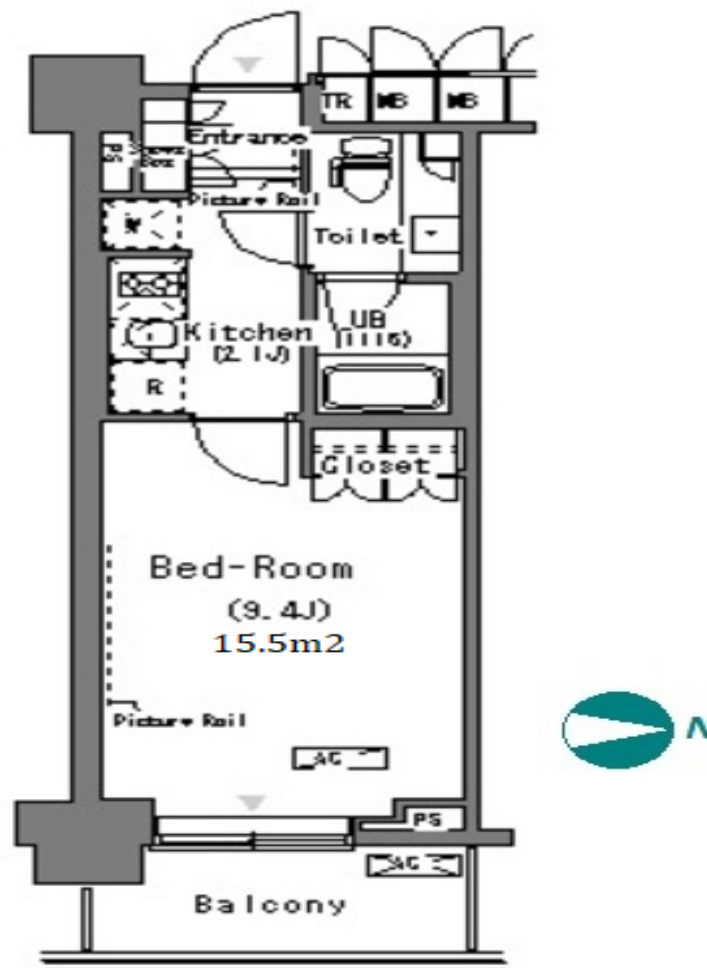


Property Name	PARK AXIS TATSUMI STAGE	Unit No.	TYPE	Access	Tatsumi Station on Yurakucho Line (5 min) Shin-kiba Station on Rinkai Line (15 min)
		219	Apt.		
Address	2-1-56, Tatsumi, Koto-Ku, Tokyo				

Mid-rise apt. in Tastumi near Shinkiba area



\*The actual Layout & Size may differ slightly from this floor plans & pictures.

Lease Conditions			
LAYOUT	Studio		
SIZE	28.48 m²/306.55 ft²		
RENT	JPY 98,000 / month		
Management Fee	JPY8,000/month		
Deposit	2 months	Key Money	1 month
Lease Term	Standard lease for 24 months		
Available	Mid, May, 2024		
Renewal Fee	1 month		
Agent Fee	1 month + tax		
Other Info	Key Replacement Fee : JPY15,000 Tax not included / Guarantor Company : TBC / Auto lock / Air-Con / Separated Toilet / Balcony / Penalty Fee for Early Cancellation / Musical Instrument Negotiable / Flooring / Bathroom dryer		

Building Information			
Completion	Jan, 2008	Earthquake Resistance	New
Structure	RC, 13 floors above and 1 basement floors		
Car Parking	extra charge		
Bicycle Parking	TBC		
Music Instrument	Negotiable	Pet	Allowed
Facilities	Motorcycle Parking (TBC) / Near Large Parks / Janitor / Delivery box / Elevator / Security		

Remarks	
Renters Insurance : Required / Bicycle parking : Registration fee: JPY.2,000+tax / Pet:additional deposit ( 1 month ) / Pet : a small dog or up to two cats	



HOUSEREP TOKYO INC.

ハウスレップトーキョー株式会社

#301, 1-4-15, Hiroo, Shibuya-ku, Tokyo 150-0012, Japan

+81 (0)3 6427 5860

inquiry@housserep-tokyo.com

Transaction Type : Intermediate

Agent Fee : 1 month + tax

Website : www.housserep-tokyo.com

