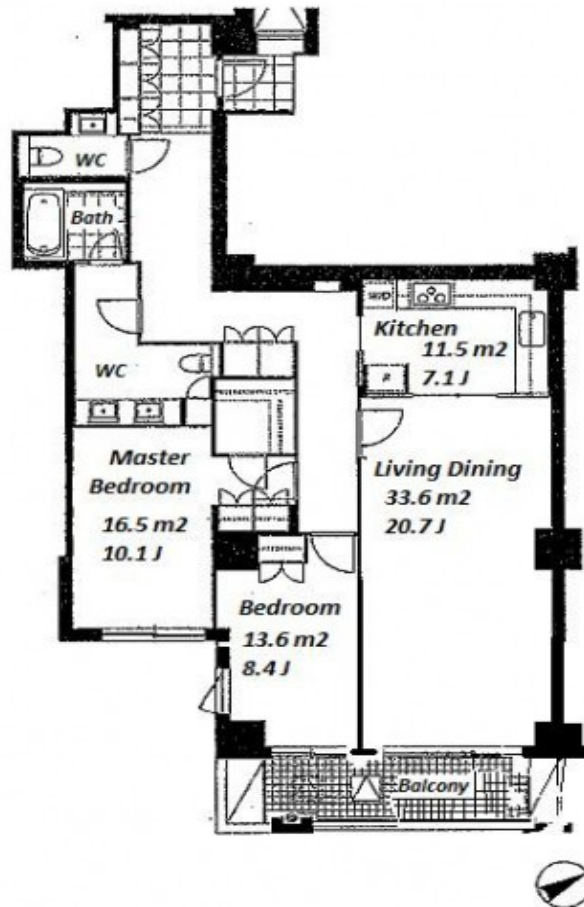
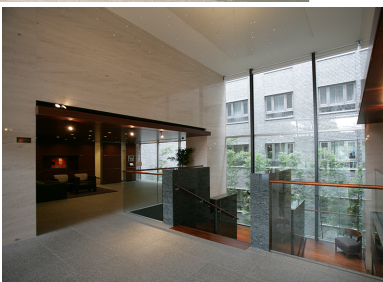


Property Name	AZABU DAIICHI MANSIONS	Unit No.	TYPE	Access	Ropponngi Station on Hibiya Line (6 min) Ropponngicchoume Station on Namboku Line (7 min) Akasaka Station on Chiyoda Line (13 min)
		502	Apt.		
Address	4-2-50, Roppongi, Minato-Ku, Tokyo				

Luxurious Mid-Rise in Roppongi / Akasaka, near "Hinokicho Park"



Lease Conditions	
LAYOUT	2 BR
SIZE	122.28 m ² /1316.21 ft ²
RENT	JPY 950,000 / month
Management Fee	-
Deposit	4 months
Key Money	-
Lease Term	Fixed term lease for 24 months
Available	Now
Renewal Fee	-
Agent Fee	1 month + tax
Other Info	Guarantor Company : TBC / No Key Money / Auto lock / Fridge / Air-Con / Separated Toilet / Balcony / Penalty Fee for Early Cancellation / Washer / Dryer / Oven

Building Information			
Completion	Jan, 2006	Earthquake Resistance	New
Structure	SRC, 9 floors above and 1 basement floors		
Car Parking	JPY45,000 ~ 65,000 + tax / month		
Bicycle Parking	TBC		
Music Instrument	-	Pet	Negotiable
Facilities	Motorcycle Parking (JPY5,000 ~ 10,000 + tax / month) / Trunk Room (JPY10,000/ month) / Gym ((Included)) / Within 20 min walk to Roppongi / Near Large Parks / Front desk / Delivery box / Elevator		

Remarks
Renters Insurance : Required

*The actual Layout & Size may differ slightly from this floor plans & pictures.



HOUSEREP TOKYO INC.

ハウスレップトーキョー株式会社

#301, 1-4-15, Hiroo, Shibuya-ku, Tokyo 150-0012, Japan

+81 (0)3 6427 5860

inquiry@housserep-tokyo.com

Transaction Type : Intermediate

Agent Fee : 1 month + tax

Website : www.housserep-tokyo.com

