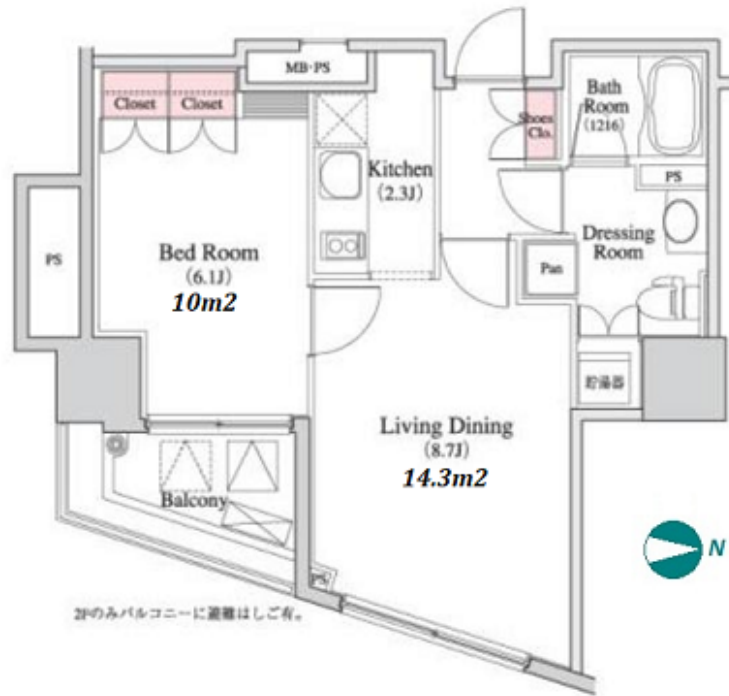


Property Name	PARK CUBE HATCHOBORI	Unit No.	TYPE	Access	Hacchoubori Station on JR Keiyo Line (1 min) Hacchoubori Station on Hibiya Line (1 min)
		203	Apt.		
Address	4-8-7, Hatchobori, Chuo-Ku, Tokyo				

Mid-rise Apt. in Hachobori, near Tokyo Bay Area



Lease Conditions		
LAYOUT	1 BR	
SIZE	41.12 m ² /442.61 ft ²	
RENT	JPY 169,000 / month	
Management Fee	JPY10,000/month	
Deposit	2 months	Key Money -
Lease Term	Standard lease for 24 months	
Available	Now	
Renewal Fee	1 month	
Agent Fee	1 month + tax	
Other Info	Key Replacement Fee : JPY15,000 Tax not included / Guarantor Company : TBC / No Key Money / Auto lock / Air-Con / Separated Toilet / Balcony / Internet (Extra Charge) / Penalty Fee for Early Cancellation / Musical Instrument Negotiable / CS/CATV / Flooring / IH Stoves / Bathroom dryer	

Building Information			
Completion	Mar, 2009	Earthquake Resistance	New
Structure	RC, 16 floors above and 2 basement floors		
Car Parking	JPY40,000 + tax / month		
Bicycle Parking	TBC		
Music Instrument	Negotiable	Pet	Allowed
Facilities	Motorcycle Parking (TBC) / Within 20 min to Roppongi by train / Within 20 min to Tokyo station by car / Near Large Parks / Janitor / Delivery box / Elevator / Close to Station / High-rise		

*The actual Layout & Size may differ slightly from this floor plans & pictures.



HOUSEREP TOKYO INC.
ハウスレップトーキョー株式会社

#301, 1-4-15, Hiroo, Shibuya-ku, Tokyo 150-0012, Japan
+81 (0)3 6427 5860 inquiry@housserrep-tokyo.com

Transaction Type : Intermediate
Agent Fee : 1 month + tax

Website : www.housserrep-tokyo.com



Remarks
Renters Insurance : Required / Pet:additional deposit (1 month) / Pet : a small dog or a cat