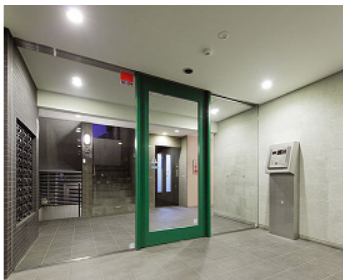


Property Name	COMFORIA GAKUGEIDAIGAKU	Unit No.	109	TYPE	Apt.	Access	Gakugeidaigaku Station on Toyoko Line (8 min)
Address	6-46-6, Shimoma, Setagaya-Ku, Tokyo						

Low-rise apartment in Gakugeidaigaku area



\*The actual Layout & Size may differ slightly from this floor plans & pictures.

Lease Conditions		
LAYOUT	1 Room+S	
SIZE	41.4 m <sup>2</sup> /445.62 ft <sup>2</sup>	
RENT	JPY 162,000 / month	
Management Fee	JPY8,000/month	
Deposit	1 month	Key Money -
Lease Term	Standard lease for 24 months	
Available	Now	
Renewal Fee	1 month	
Agent Fee	1 month + tax	
Other Info	Key Replacement Fee : JPY20,000 Tax not included / Penalty Fee for Early Cancellation / Separated Toilet / Balcony / Flooring / Auto lock / Air-Con / Bathroom dryer	

Building Information			
Completion	Apr, 2005	Earthquake Resistance	New
Structure	RC, 4 story		
Car Parking	JPY30,000/ month		
Bicycle Parking	for 1 space ( Included )		
Music Instrument	-	Pet	Allowed
Facilities	Delivery box / Elevator		

Remarks
Renters Insurance : Required / Pet:additional deposit ( 1 month ) / Pet: Additional 1 month deposit



HOUSEREP TOKYO INC.

ハウズレップトーキョー株式会社

#301, 1-4-15, Hiroo, Shibuya-ku, Tokyo 150-0012, Japan

+81 (0)3 6427 5860

inquiry@houserep-tokyo.com

Transaction Type : Intermediate

Agent Fee : 1 month + tax

Website : www.houserep-tokyo.com

