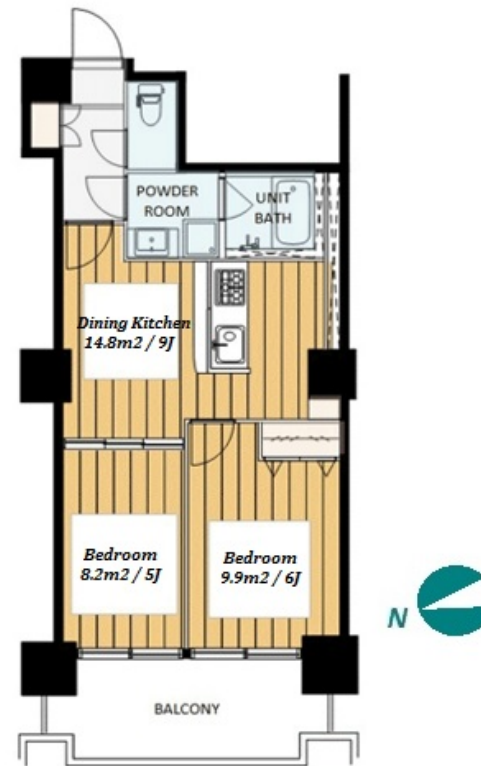


Property Name	ROPPONGI VIEW TOWER	Unit No.	TYPE	Access	Roppongi Station on Namboku Line (3 min) Kamiyachou Station on Hibiya Line (5 min)
		611	Apt.		
Address	1-9-35, Roppongi, Minato-Ku, Tokyo				

High-rise Apartment in Roppongi, near Azabu / Akasaka



Lease Conditions		
LAYOUT	2 BR	
SIZE	44.64 m²/480.5 ft²	
RENT	JPY 249,000 / month	
Management Fee	-	
Deposit	2 months	Key Money -
Lease Term	Fixed term lease for 36 months	
Available	Now	
Renewal Fee	-	
Agent Fee	1 month + tax	
Other Info	Depreciation : 1 month / No Key Money / Auto lock / Renovated / Air-Con / Separated Toilet / Balcony / Penalty Fee for Early Cancellation / CS/CATV / Flooring / Bathroom dryer	

Building Information			
Completion	Oct, 1993	Earthquake Resistance	New
Structure	RC, 20 floors above		
Car Parking	extra charge		
Bicycle Parking	extra charge		
Music Instrument	-	Pet	N/A
Facilities	Motorcycle Parking (extra charge) / Trunk Room (extra charge) / Within 20 min to Roppongi by train / Near Large Parks / Janitor / Delivery box / Elevator / Close to Station / High-rise		

Remarks
Renters Insurance : Required

*The actual Layout & Size may differ slightly from this floor plans & pictures.



HOUSEREP TOKYO INC.

ハウスレップトーキョー株式会社

#301, 1-4-15, Hiroo, Shibuya-ku, Tokyo 150-0012, Japan

+81 (0)3 6427 5860

inquiry@housserrep-tokyo.com

Transaction Type : Intermediate

Agent Fee : 1 month + tax

Website : www.housserrep-tokyo.com

