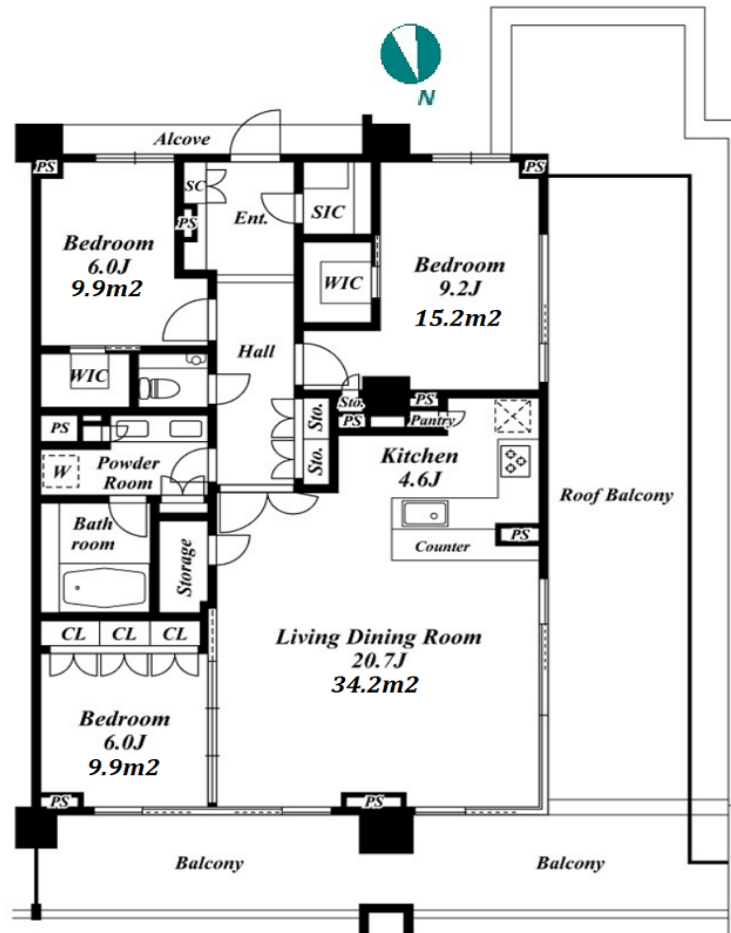
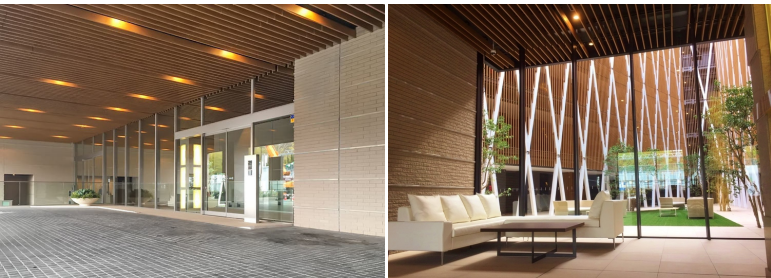


Property Name	GARDEN HILLS YOTSUYA (Geihin-no-Mori)	Unit No.	TYPE	Access	Shinanomachi Station on JR Chuo Line Rapid Service (9 min) Yotsuya Station on Marunouchi Line (10 min) Yotsuya Station on JR Chuo-Sobu Line (10 min)
		5F	Apt.		
Address	20-3, Minamimotomachi, Shinjuku-Ku, Tokyo				

Luxury Low Rise Apt. next to "Akasaka Palace / Guest House"



Lease Conditions		
LAYOUT	3 BR	
SIZE	111.95 m ² /1205.01 ft ²	
RENT	JPY 720,000 / month	
Management Fee	JPY30,000/month	
Deposit	3 months	Key Money 1 month
Lease Term	Standard lease for 24 months	
Available	20, Jun, 2024	
Renewal Fee	1 month	
Agent Fee	1 month + tax	
Other Info	Guarantor Company : TBC / Auto lock / Air-Con / Separated Toilet / Balcony / Internet (Extra Charge) / Musical Instrument Negotiable / Roof Balcony / CS/CATV / Flooring / Floor Heating / Dishwasher / Bathroom dryer / WIC	

Building Information		
Completion	Nov, 2016	Earthquake Resistance New
Structure	RC, 7 floors above and 2 basement floors	
Car Parking	for 1 space (Included)	
Bicycle Parking	JPY200 ~ 300 + tax / month	
Music Instrument	Negotiable	Pet -
Facilities	Motorcycle Parking (TBC) / Gym ((Included)) / Within 20 min to Tokyo station by car / Near Large Parks / Front desk / Concierge / Janitor / Delivery box / Elevator / Security / 24h Garbage Drop-off / Fitness / Gym	

Remarks
Renters Insurance : Required

*The actual Layout & Size may differ slightly from this floor plans & pictures.



HOUSEREP TOKYO INC.

ハウスレップトーキョー株式会社

#301, 1-4-15, Hiroo, Shibuya-ku, Tokyo 150-0012, Japan

+81 (0)3 6427 5860

inquiry@housserrep-tokyo.com

Transaction Type : Intermediate

Agent Fee : 1 month + tax

Website : www.housserrep-tokyo.com

