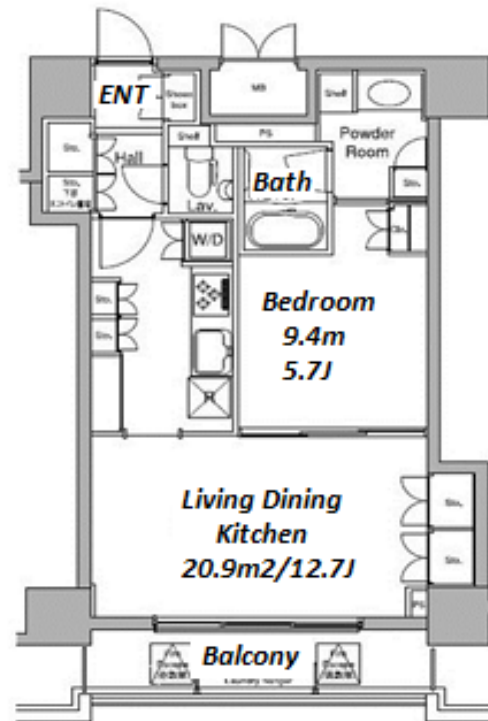


Property Name	COMFORIA MISHUKU	Unit No.	TYPE	Access	Ikejirihashi Station on Denentoshi Line (6 min) Sanngennjaya Station on Tokyu Setagaya Line (12 min) Sanngennjaya Station on Denentoshi Line (12 min)
		1302	Apt.		
Address	3-23-2, Ikejiri, Setagaya-Ku, Tokyo				



Lease Conditions	
LAYOUT	1 BR
SIZE	49.09 m²/528.4 ft²
RENT	JPY 225,000 / month
Management Fee	JPY 10,000/month
Deposit	2 months
Key Money	-
Lease Term	Standard lease for 24 months
Available	Now
Renewal Fee	1 month
Agent Fee	1 month + tax
Other Info	Key Replacement Fee : JPY30,000 Tax not included / Guarantor Company : TBC / No Key Money / Auto lock / Air-Con / Separated Toilet / Balcony / Penalty Fee for Early Cancellation / Flooring / Bathroom dryer

Building Information	
Completion	Feb, 2004
Earthquake Resistance	New
Structure	RC, 14 floors above
Car Parking	N/A
Bicycle Parking	( Included )
Music Instrument	-
Pet	Allowed
Facilities	Delivery box / Elevator

Remarks
Pet:additional deposit ( 1 month ) / Pet : No dog/ up to 3 cats

\*The actual Layout & Size may differ slightly from this floor plans & pictures.



HOUSEREP TOKYO INC.

ハウスレップトーキョー株式会社

#301, 1-4-15, Hiroo, Shibuya-ku, Tokyo 150-0012, Japan

+81 (0)3 6427 5860

inquiry@housserrep-tokyo.com

Transaction Type : Intermediate

Agent Fee : 1 month + tax

Website : www.housserrep-tokyo.com

