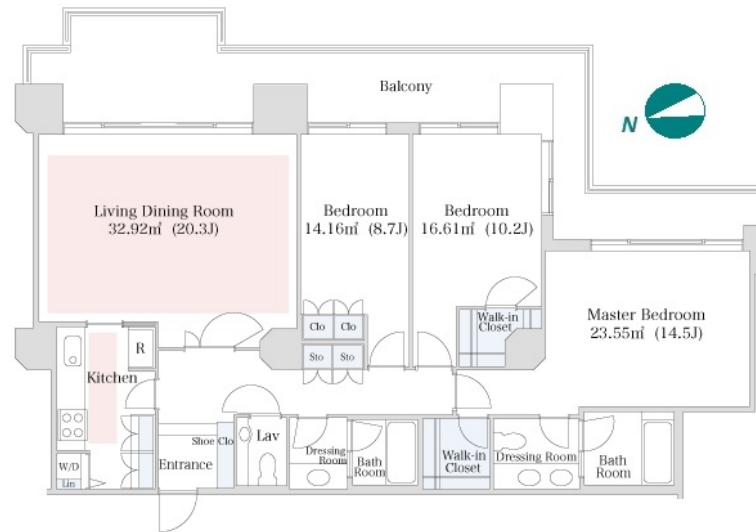


Property Name	IZUMI GARDEN RESIDENCE	Unit No.	TYPE	Access	Ropponngiicchoume Station on Namboku Line (2 min) Kamiyachou Station on Hibiya Line (6 min) Tameikesannnou Station on Ginza Line (10 min)
		203	Apt.		
Address	1-5-3, Roppongi, Minato-Ku, Tokyo				

## Luxury Tower Residence in Roppongi near Akasaka / Azabu



Lease Conditions		
LAYOUT	3 BR	
SIZE	137.77 m²/1482.94 ft²	
RENT	JPY 1,188,000 / month	
Management Fee	-	
Deposit	3 months	Key Money -
Lease Term	Fixed term lease for 36 months	
Available	End, Jun, 2024	
Renewal Fee	-	
Agent Fee	1 month + tax	
Other Info	Depreciation : 1 month / Guarantor Company : TBC / No Key Money / Auto lock / Fridge / Air-Con / Separated Toilet / Balcony / Internet Included / Penalty Fee for Early Cancellation / 2+ bathrooms / Flooring / Washer / Dryer / Dishwasher / Oven / WIC / Large Dog Friendly / 2 Toilets	

Building Information			
Completion	Jul, 2002	Earthquake Resistance	New
Structure	SRC, 32 story		
Car Parking	JPY40,000 ~ 80,000 + tax / month		
Bicycle Parking	extra charge		
Music Instrument	-	Pet	Allowed
Facilities	Motorcycle Parking (extra charge) / Trunk Room (TBC) / Gym (( Included )) / Within 20 min walk to Roppongi / Within 20 min to Roppongi by train / Within 20 min to Tokyo station by car / Near Large Parks / pool / Front desk / Concierge / Elevator / Security / Close to Station / High-rise		

\*The actual Layout & Size may differ slightly from this floor plans & pictures.



# HOUSEREP TOKYO INC.

ハウスレップトーキョー株式会社

#301, 1-4-15, Hiroo, Shibuya-ku, Tokyo 150-0012, Japan

+81 (0)3 6427 5860 inquiry@housserep-tokyo.com

Transaction Type : Intermediate

Agent Fee : 1 month + tax

Website : www.housserep-tokyo.com



Remarks
Pet:additional deposit ( 1 month )