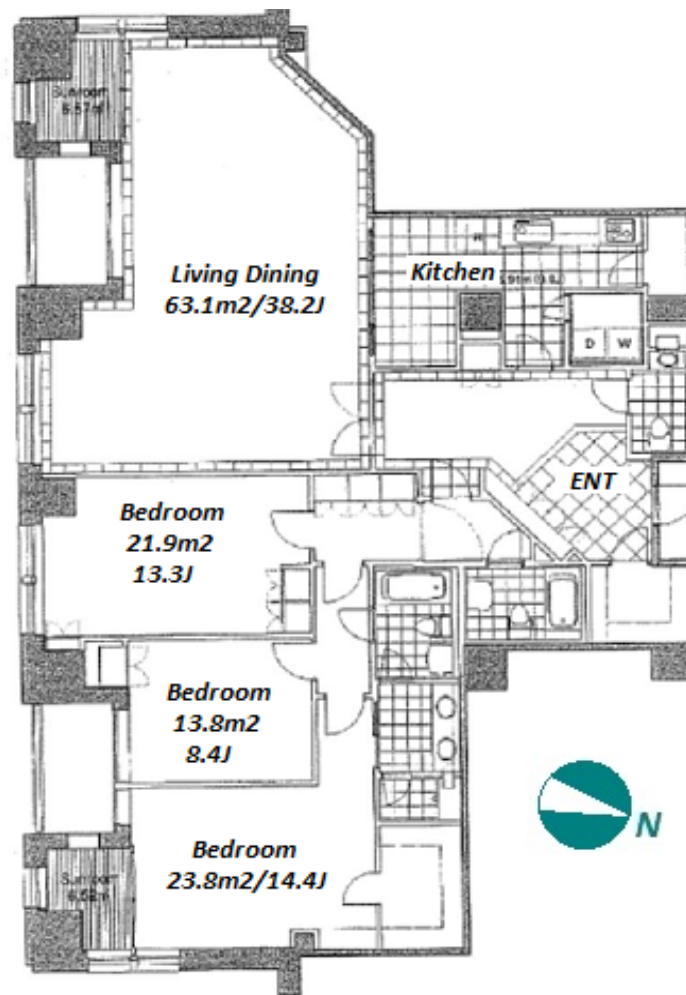
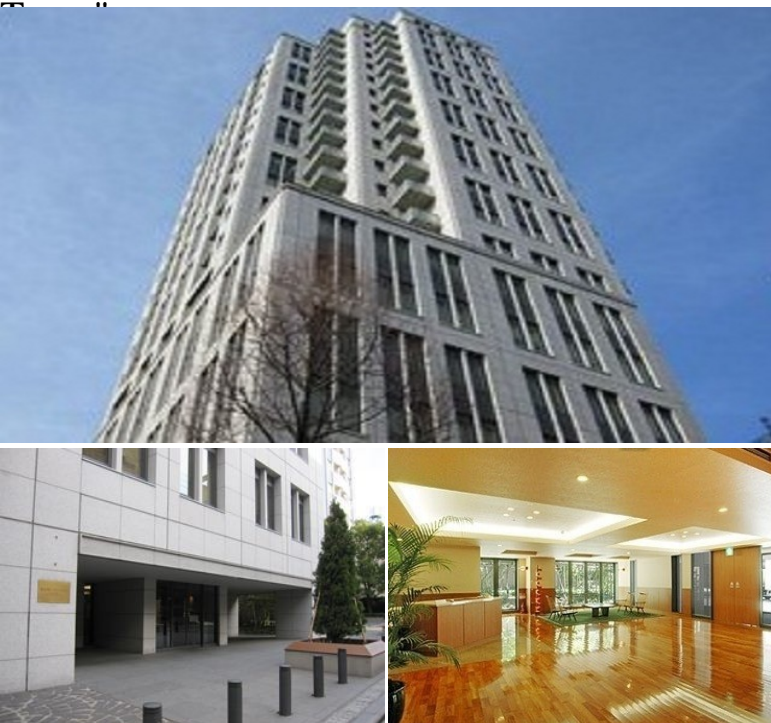


Property Name	AOYAMA DAIICHI MANSIONS	Unit No.	TYPE	Access	Aoyamaicchoume Station on Ginza Line (1 min) Aoyamaicchoume Station on Oedo Line (1 min) Nogizaka Station on Chiyoda Line (7 min)
		1602	Apt.		
Address	8-4-10, Akasaka, Minato-Ku, Tokyo				

High Quality Residence, near the Outer Gardens of Meiji Shrine "Jingu-Gaien" & "Tokyo Mid



*The actual Layout & Size may differ slightly from this floor plans & pictures.

Lease Conditions	
LAYOUT	3 BR
SIZE	220.92 m²/2377.96 ft²
RENT	JPY 1,500,000 / month
Management Fee	-
Deposit	4 months
Key Money	-
Lease Term	Fixed term lease for 24 months
Available	Mid, Nov, 2024
Renewal Fee	-
Agent Fee	1 month + tax
Other Info	Guarantor Company : TBC / No Key Money / Auto lock / Fridge / Air-Con / Separated Toilet / Balcony / Internet Included / Penalty Fee for Early Cancellation / Washer / Dryer / Dishwasher / Oven

Building Information			
Completion	Sep, 2003	Earthquake Resistance	New
Structure	SRC, 22 floors above and 2 basement floors		
Car Parking	JPY45,000 ~ 60,000 + tax / month		
Bicycle Parking	TBC		
Music Instrument	-	Pet	N/A
Facilities	Motorcycle Parking (JPY7,000 + tax / month) / Trunk Room (JPY7,000 ~ 10,000 + tax / month) / Gym (JPY2,000/ month) / Within 20 min walk to Roppongi / Within 20 min to Roppongi by train / Within 20 min to Tokyo station by car / Near Large Parks / Concierge / Delivery box / Elevator / Close to Station / High-rise		

Remarks
Renters Insurance : Required / Hotwater supply: JPY.23,000+tax/month / Air-con : JPY.48,000+tax/month



HOUSEREP TOKYO INC.

ハウズレップトーキョー株式会社

#301, 1-4-15, Hiroo, Shibuya-ku, Tokyo 150-0012, Japan

+81 (0)3 6427 5860

inquiry@housserrep-tokyo.com

Transaction Type : Intermediate

Agent Fee : 1 month + tax

Website : www.housserrep-tokyo.com

