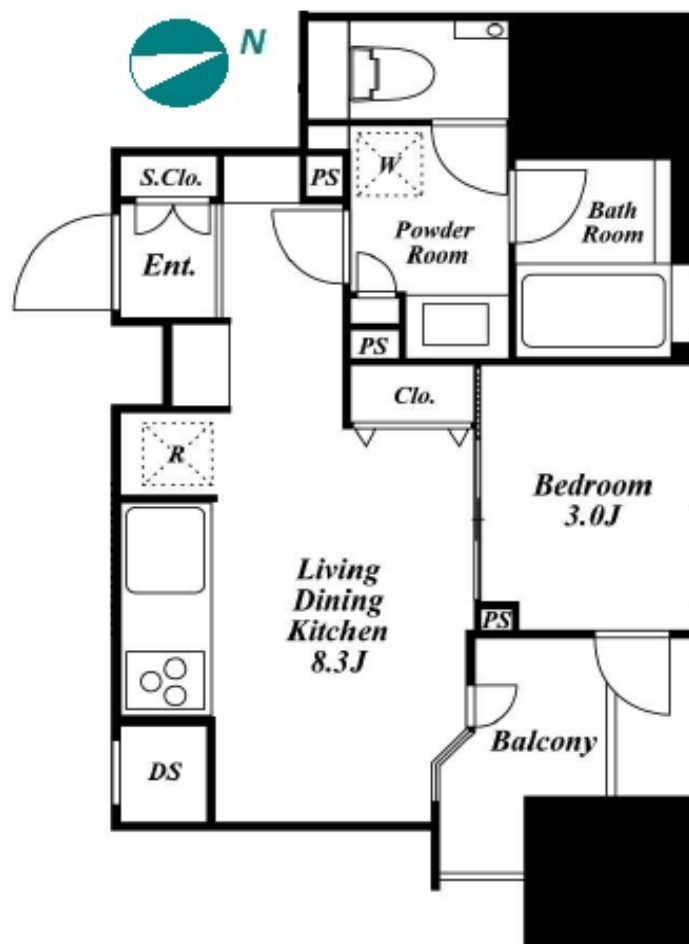


Property Name	ASAHI MANSION GOTANDA	Unit No.	TYPE	Access	Gotanda Station on JR Yamanote Line (5 min) Gotanda Station on Toei Asakusa Line (5 min) Gotanda Station on Tokyu Ikegami Line (5 min)
		1602	Apt.		
Address	2-28-4, Nishigotanda, Shinagawa-Ku, Tokyo				

High-rise Apt. in Gotanda, easy access to Ebisu, Shibuya, Shinjuku



*The actual Layout & Size may differ slightly from this floor plans & pictures.

Lease Conditions			
LAYOUT	1 BR		
SIZE	30.99 m²/333.57 ft²		
RENT	JPY 147,000 / month		
Management Fee	JPY8,000/month		
Deposit	2 months	Key Money	-
Lease Term	Fixed term lease for 36 months		
Available	Now		
Renewal Fee	-		
Agent Fee	1 month + tax		
Other Info	Guarantor Company : TBC / No Key Money / Auto lock / Air-Con / Separated Toilet / Balcony / Internet (Extra Charge) / Penalty Fee for Early Cancellation / Musical Instrument Negotiable / Flooring / Bathroom dryer		

Building Information			
Completion	Apr, 2013	Earthquake Resistance	New
Structure	RC, 18 story		
Car Parking	N/A		
Bicycle Parking	TBC		
Music Instrument	Negotiable	Pet	N/A
Facilities	Within 20 min to Roppongi by train / Within 20 min to Tokyo station by car / Near Large Parks / Delivery box / Elevator / High-rise		

Remarks



HOUSEREP TOKYO INC.

ハウズレップトーキョー株式会社

#301, 1-4-15, Hiroo, Shibuya-ku, Tokyo 150-0012, Japan

+81 (0)3 6427 5860

inquiry@houserep-tokyo.com

Transaction Type : Intermediate

Agent Fee : 1 month + tax

Website : www.houserep-tokyo.com

