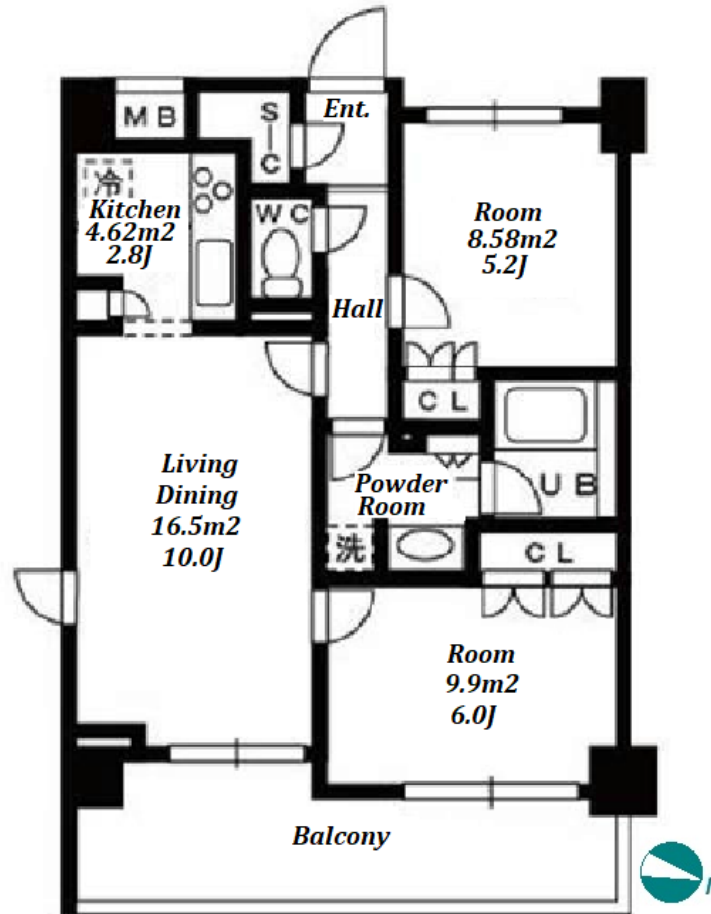


Property Name	SHANPIA GRANDE FUKASAWA	Unit No.	TYPE	Access	Sakurashinnmachi Station on Denentoshi Line (14 min)
		313	Apt.		
Address	7-2-14, Fukasawa, Setagaya-Ku, Tokyo				

## Rental Apt. in Fukazawa, Setagaya area



\*The actual Layout & Size may differ slightly from this floor plans & pictures.

Lease Conditions			
LAYOUT	2 BR		
SIZE	55.51 m <sup>2</sup> /597.5 ft <sup>2</sup>		
RENT	JPY 209,000 / month		
Management Fee	JPY10,000/month		
Deposit	2 months	Key Money	2 months
Lease Term	Standard lease for 24 months		
Available	End, Jul, 2024		
Renewal Fee	1 month		
Agent Fee	1 month + tax		
Other Info	Key Replacement Fee : JPY35,000 Tax not included / Guarantor Company : TBC / Auto lock / Air-Con / Separated Toilet / Balcony / Flooring / Bathroom dryer		

Building Information			
Completion	Oct, 2011	Earthquake Resistance	New
Structure	RC, 7 floors above		
Car Parking	N/A		
Bicycle Parking	N/A		
Music Instrument	-	Pet	Allowed
Facilities	Delivery box / Elevator		

Remarks	
Renters Insurance : Required / Tenant support fee: JPY.10,000+tax/2years / Pet:additional deposit ( 1 month ) / Pet : a small dog or up to two cats	



HOUSEREP TOKYO INC.

ハウスレップトーキョー株式会社

#301, 1-4-15, Hiroo, Shibuya-ku, Tokyo 150-0012, Japan

+81 (0)3 6427 5860

inquiry@housserrep-tokyo.com

Transaction Type : Intermediate

Agent Fee : 1 month + tax

Website : www.housserrep-tokyo.com

