

FOR RENT		Property ID No. :133470		HOUSEREP TOKYO INC.		Website : www.housserrep-tokyo.com	
Property Name	MOTOAZABU HILLS FOREST			Unit No.	TYPE	Access	Azabujuban Station on Namboku Line (7 min) Hiroo Station on Hibiya Line (13 min)
				TO1307	Apt.		
Address	1-3-1, Motoazabu, Minato-Ku, Tokyo						

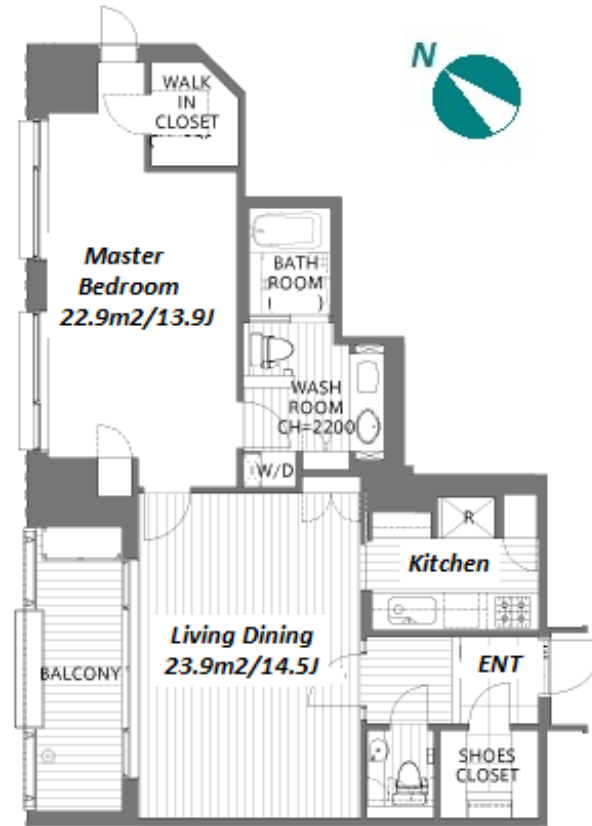
Lease Conditions			
LAYOUT	1 BR		
SIZE	78.81 m ² /848.3 ft ²		
RENT	JPY 840,000 / month		
Management Fee	-		
Deposit	4 months	Key Money	-
Lease Term	Fixed term lease for 36 months		
Available	End, Sep, 2024		
Renewal Fee	-		
Agent Fee	1 month + tax		
Other Info	Guarantor Company : TBC / No Key Money / Auto lock / Fridge / Air-Con / Separated Toilet / Balcony / Internet Included / Penalty Fee for Early Cancellation / BBQ place / Garden/Terrace / Roof Balcony / Flooring / Washer / Dryer / Dishwasher / Oven		

Building Information			
Completion	May, 2002	Earthquake Resistance	New
Structure	SRC, RC, CFT, 29 floors above and 3 basement floors		
Car Parking	JPY50,000 ~ 80,000/ month		
Bicycle Parking	TBC		
Music Instrument	-	Pet	Negotiable
Facilities	Motorcycle Parking (TBC) / Trunk Room (TBC) / Gym (JPY15,000/ month) / Within 20 min walk to Roppongi / Near Large Parks / pool / Front desk / Concierge / Elevator / High-rise		

Remarks

Luxury High-Rise in Motoazabu, near "Azabujuban" & "Arisugawa Park"

Renters Insurance : Required



*The actual Layout & Size may differ slightly from this floor plans & pictures.



HOUSEREP TOKYO INC.

ハウスレップトーキョー株式会社

#301, 1-4-15, Hiroo, Shibuya-ku, Tokyo 150-0012, Japan

+81 (0)3 6427 5860 inquiry@houserep-tokyo.com

Transaction Type : Intermediate

Agent Fee : 1 month + tax

Website : www.houserep-tokyo.com

