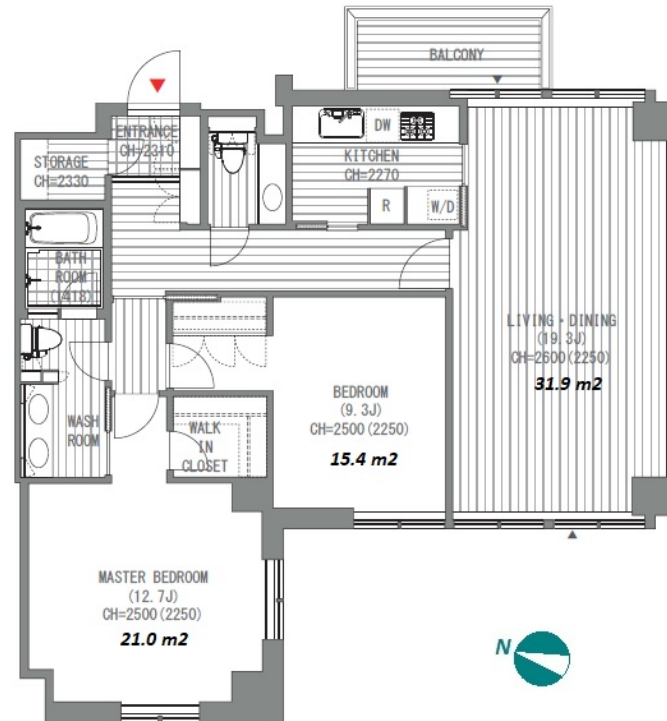


Property Name	ROPPONGI HILLS GATE TOWER RESIDENCE	Unit No.	TYPE	Access	Azabujuban Station on Namboku Line (6 min) Ropponngi Station on Hibiya Line (7 min)
		1406	Apt.		
Address	6-11-2, Roppongi, Minato-Ku, Tokyo				

Luxury Residence at Roppongi Hills, near Azabujuban Shopping Streets



Lease Conditions		
LAYOUT	2 BR	
SIZE	106.75 m ² /1149.04 ft ²	
RENT	JPY 1,030,000 / month	
Management Fee	-	
Deposit	4 months	Key Money -
Lease Term	Fixed term lease for 36 months	
Available	End, Aug, 2024	
Renewal Fee	-	
Agent Fee	1 month + tax	
Other Info	Guarantor Company : TBC / No Key Money / Auto lock / Fridge / Air-Con / Separated Toilet / Balcony / Internet Included / Penalty Fee for Early Cancellation / Flooring / Floor Heating / Washer / Dryer / Dishwasher / Oven	

Building Information		
Completion	Jul, 2001	Earthquake Resistance New
Structure	SRC, 15 floors above and 2 basement floors	
Car Parking	JPY50,000/ month	
Bicycle Parking	TBC	
Music Instrument	-	Pet Negotiable
Facilities	Motorcycle Parking (TBC) / Gym (JPY15,000/month) / Within 20 min walk to Roppongi / Near Large Parks / pool / Front desk / Concierge / Elevator / High-rise	

Remarks
Renters Insurance : Required / *Gym : Extra Charge

*The actual Layout & Size may differ slightly from this floor plans & pictures.



HOUSEREP TOKYO INC.

ハウスレップトーキョー株式会社

#301, 1-4-15, Hiroo, Shibuya-ku, Tokyo 150-0012, Japan

+81 (0)3 6427 5860

inquiry@housserep-tokyo.com

Transaction Type : Intermediate

Agent Fee : 1 month + tax

Website : www.housserep-tokyo.com

