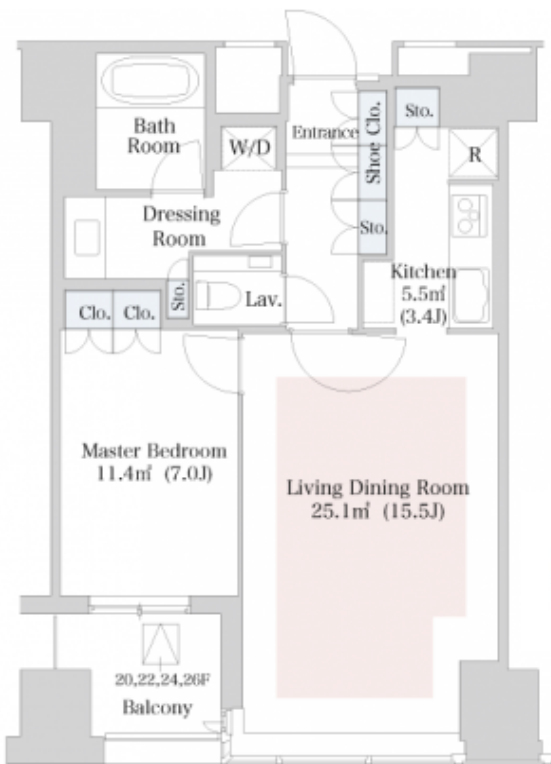
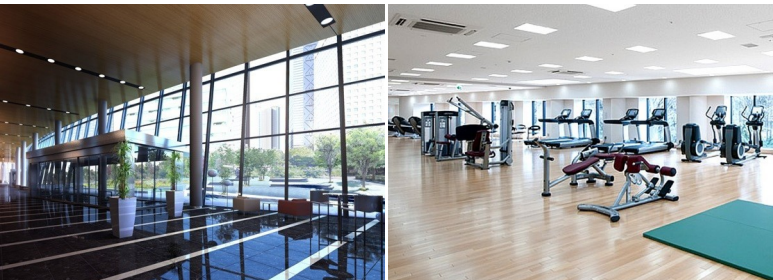
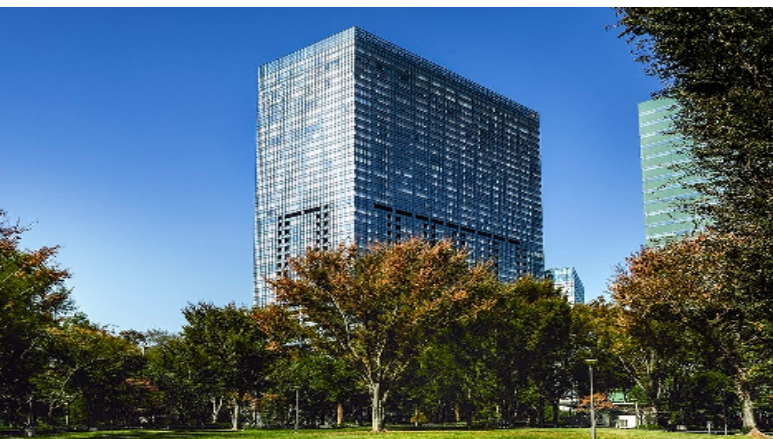



FOR RENT		Property ID No. :132862		HOUSEREP TOKYO INC.		Website : www.housserep-tokyo.com	
Property Name	CENTRAL PARK TOWER LA TOUR SHINJUKU		Unit No.	TYPE	Access	Tochoumae Station on Oedo Line (5 min) Nishishinnjuku Station on Marunouchi Line (6 min) Shinnjuku Station on JR Yamanote Line (14 min)	
Address	6-15-1, Nishishinjuku, Shinjuku-Ku, Tokyo		2017	Apt.			

Luxury High Rise Residence in Nishi-Shinjuku, in front of Central Park



Lease Conditions		
LAYOUT	1 BR	
SIZE	61.36 m²/660.47 ft²	
RENT	JPY 436,000 / month	
Management Fee	-	
Deposit	2 months	Key Money -
Lease Term	Fixed term lease for 36 months	
Available	End, May, 2024	
Renewal Fee	-	
Agent Fee	1 month + tax	
Other Info	Depreciation : 1 month / No Key Money / Auto lock / Air-Con / Separated Toilet / Balcony / Internet Included / Penalty Fee for Early Cancellation / Flooring / Floor Heating / IH Stoves / Bathroom dryer	

Building Information			
Completion	Feb, 2010	Earthquake Resistance	New
Structure	SRC, 44 story		
Car Parking	JPY40,000 ~ 65,000/ month		
Bicycle Parking	TBC		
Music Instrument	-	Pet	Allowed
Facilities	Motorcycle Parking (TBC) / Gym (( Included )) / Near Large Parks / Front desk / Concierge / Elevator / Sky lounge / High-rise		



HOUSEREP TOKYO INC.


ハウスレップトーキョー株式会社

#301, 1-4-15, Hiroo, Shibuya-ku, Tokyo 150-0012, Japan  
 +81 (0)3 6427 5860 inquiry@housserep-tokyo.com

Transaction Type : Intermediate

Agent Fee : 1 month + tax

Website : www.housserep-tokyo.com



Remarks
Pet:additional deposit ( 1 month )