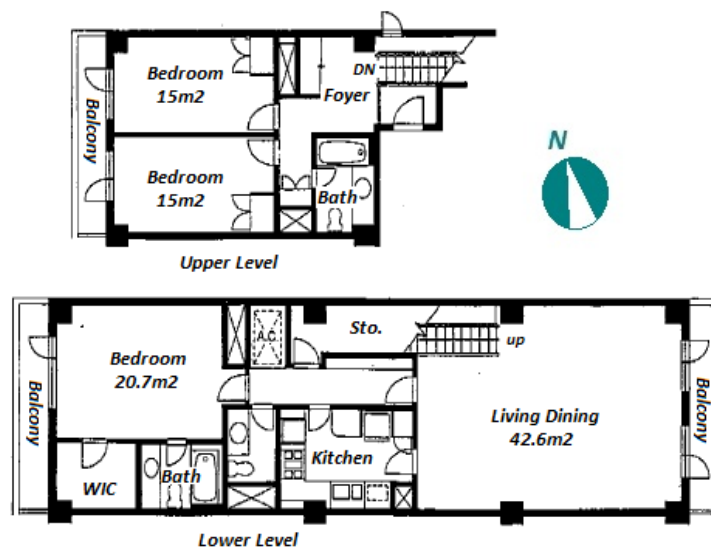


Property Name	AZABU TERRACE APARTMENT	Unit No.	TYPE	Access	Ropponngi Station on Hibiya Line (8 min) Azabujuban Station on Namboku Line (8 min) Ropponngicchoume Station on Namboku Line (11 min)
		421	Apt.		
Address	5-16-35, Roppongi, Minato-Ku, Tokyo				

Vintage rental apt. w/ gym & pool, in Roppongi / Azabujuban area



Lease Conditions			
LAYOUT	3 BR		
SIZE	163.66 m <sup>2</sup> /1761.62 ft <sup>2</sup>		
RENT	JPY 800,000 / month		
Management Fee	-		
Deposit	4 months	Key Money	-
Lease Term	Fixed term lease for 24 months		
Available	Early, Mar, 2024		
Renewal Fee	-		
Agent Fee	1 month + tax		
Other Info	Guarantor Company : TBC / Auto lock / Renovated / Fridge / Air-Con / Balcony / Loft/Maisonnette / Penalty Fee for Early Cancellation / 2+ bathrooms / Flooring / Washer / Dryer / Dishwasher / Oven / WIC / 2 Toilets		

Building Information			
Completion	Feb, 1980	Earthquake Resistance	Old
Structure	RC, 9 story		
Car Parking	JPY50,000 + tax / month		
Bicycle Parking	( Included )		
Music Instrument	-	Pet	N/A
Facilities	Motorcycle Parking (TBC) / Trunk Room (TBC) / Gym (( Included )) / Within 20 min walk to Roppongi / Within 20 min to Roppongi by train / Near Large Parks / pool / Front desk / Elevator		

Remarks
Renters Insurance : Required / JPY.33,000+tax/month of fixed hot water charge General utility charges *2024/4~JPY42,000+tax/month / Exercise room/Swimming Pool

\*The actual Layout & Size may differ slightly from this floor plans & pictures.



HOUSEREP TOKYO INC.

ハウスレップトーキョー 株式会社

#301, 1-4-15, Hiroo, Shibuya-ku, Tokyo 150-0012, Japan

+81 (0)3 6427 5860

inquiry@housserrep-tokyo.com

Transaction Type : Intermediate

Agent Fee : 1 month + tax

Website : www.housserrep-tokyo.com

