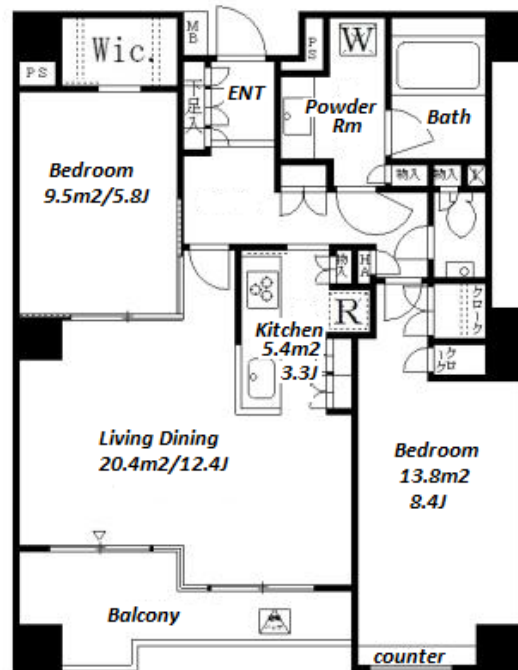


Property Name	PARK SIDE WINGS	Unit No.	TYPE	Access	Tsukishima Station on Yurakucho Line (6 min) Hacchoubori Station on Hibiya Line (11 min)
		502	Apt.		
Address	1-11-3, Tsukuda, Chuo-Ku, Tokyo				

## "Renovated" Vintage Apartment in Tsukishima area



Lease Conditions		
LAYOUT	2 BR	
SIZE	71.97 m²/774.67 ft²	
RENT	JPY 289,000 / month	
Management Fee	-	
Deposit	2 months	Key Money 1 month
Lease Term	Standard lease for 24 months	
Available	Now	
Renewal Fee	1 month	
Agent Fee	1 month + tax	
Other Info	Key Replacement Fee : JPY15,000 Tax not included / Guarantor Company : TBC / Auto lock / Air-Con / Separated Toilet / Balcony / Internet Included / Penalty Fee for Early Cancellation / Musical Instrument Negotiable / Flooring / IH Stoves / Bathroom dryer / WIC	

Building Information			
Completion	May, 1988	Earthquake Resistance	New
Structure	SRC, 14 floors above		
Car Parking	extra charge		
Bicycle Parking	for 2 spaces extra charge		
Music Instrument	Negotiable	Pet	-
Facilities	Motorcycle Parking (TBC) / Front desk / Janitor / Delivery box / Elevator		

\*The actual Layout & Size may differ slightly from this floor plans & pictures.



# HOUSEREP TOKYO INC.

ハウスレップトーキョー株式会社

#301, 1-4-15, Hiroo, Shibuya-ku, Tokyo 150-0012, Japan

+81 (0)3 6427 5860

inquiry@housserrep-tokyo.com

Transaction Type : Intermediate

Agent Fee : 1 month + tax

Website : www.housserrep-tokyo.com



Remarks
Renters Insurance : Required