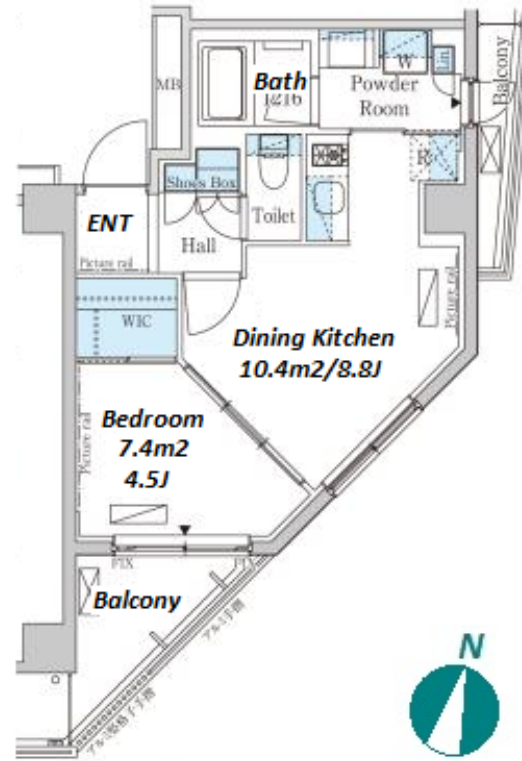
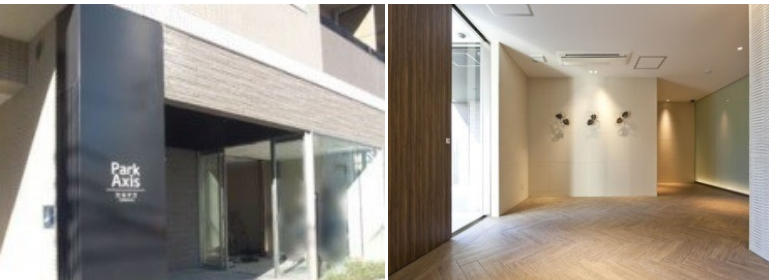


Property Name	PARK AXIS JIYUGAOKA TERRACE	Unit No.	TYPE	Access	Jiyugaoka Station on Toyoko Line (11 min) Jiyugaoka Station on Oimachi Line (11 min)
		201	Apt.		
Address	3-11-5, Yakumo, Meguro-Ku, Tokyo				

Stylish Apt. in Jiyugaoka



Lease Conditions			
LAYOUT	1 BR		
SIZE	34.89 m ² /375.55 ft ²		
RENT	JPY 160,000 / month		
Management Fee	JPY10,000/month		
Deposit	2 months	Key Money	0.5 months
Lease Term	Standard lease for 24 months		
Available	End, Jul, 2024		
Renewal Fee	1 month		
Agent Fee	1 month + tax		
Other Info	Key Replacement Fee : JPY20,000 Tax included / Guarantor Company : TBC / Auto lock / Air-Con / Separated Toilet / Balcony / Musical Instrument Negotiable / CS/CATV / Flooring / Bathroom dryer / WIC		

Building Information			
Completion	Jan, 2013	Earthquake Resistance	New
Structure	RC, 5 floors above		
Car Parking	JPY31,000 + tax / month		
Bicycle Parking	for 1 space (Included)		
Music Instrument	Negotiable	Pet	Negotiable
Facilities	Motorcycle Parking (TBC) / Delivery box		

Remarks
Renters Insurance : Required

*The actual Layout & Size may differ slightly from this floor plans & pictures.



HOUSEREP TOKYO INC.

ハウスレップトーキョー株式会社

#301, 1-4-15, Hiroo, Shibuya-ku, Tokyo 150-0012, Japan

+81 (0)3 6427 5860 inquiry@housserep-tokyo.com

Transaction Type : Intermediate

Agent Fee : 1 month + tax

Website : www.housserep-tokyo.com

