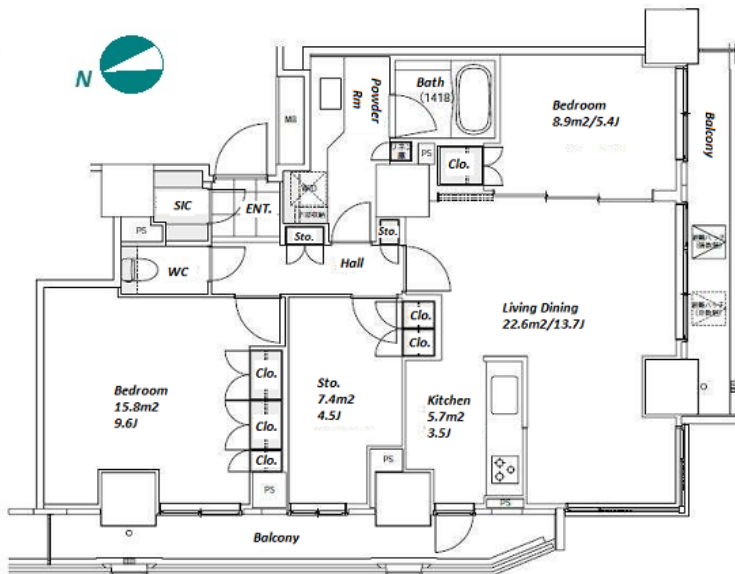
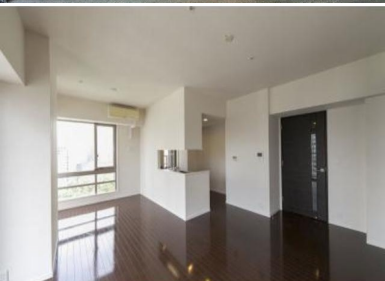


Property Name	PARK CUBE ATAGOYAMA TOWER	Unit No.	TYPE	Access	Kamiyachou Station on Hibiya Line (7 min) Toranomom Hills Station on Ginza Line (8 min)
		2102	Apt.		
Address	3-17-7, Nishishimbashi, Minato-Ku, Tokyo				

High Rise Apt in Onarimon, near "Tokyo Tower" & "Toranomon Hills"



Lease Conditions			
LAYOUT	2 BR		
SIZE	83 m ² /893.4 ft ²		
RENT	JPY 490,000 / month		
Management Fee	-		
Deposit	2 months	Key Money	1 month
Lease Term	Standard lease for 24 months		
Available	End, Mar, 2024		
Renewal Fee	1 month		
Agent Fee	1 month + tax		
Other Info	Key Replacement Fee : JPY15,000 Tax not included / Guarantor Company : TBC / Auto lock / Air-Con / Separated Toilet / Balcony / Flooring / Dishwasher / Bathroom dryer / Corner Unit		

Building Information			
Completion	Feb, 2007	Earthquake Resistance	New
Structure	RC, 31 story		
Car Parking	JPY45,000 + tax / month		
Bicycle Parking	TBC		
Music Instrument	-	Pet	Negotiable
Facilities	Motorcycle Parking (TBC) / Within 20 min to Roppongi by train / Within 20 min to Tokyo station by car / Near Large Parks / Front desk / Delivery box / Elevator / High-rise		

Remarks
Renters Insurance : Required / PET : a small dog or a cat only, additional 1 month for deposit

*The actual Layout & Size may differ slightly from this floor plans & pictures.



HOUSEREP TOKYO INC.

ハウスレップトーキョー株式会社

#301, 1-4-15, Hiroo, Shibuya-ku, Tokyo 150-0012, Japan

+81 (0)3 6427 5860

inquiry@housserrep-tokyo.com

Transaction Type : Intermediate

Agent Fee : 1 month + tax

Website : www.housserrep-tokyo.com

