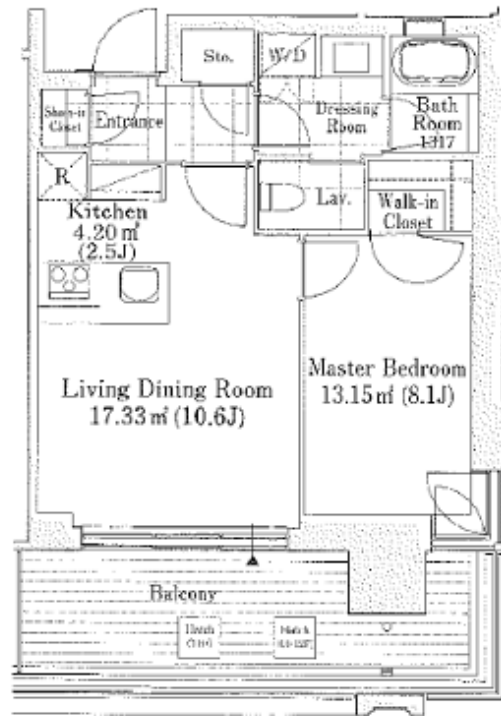
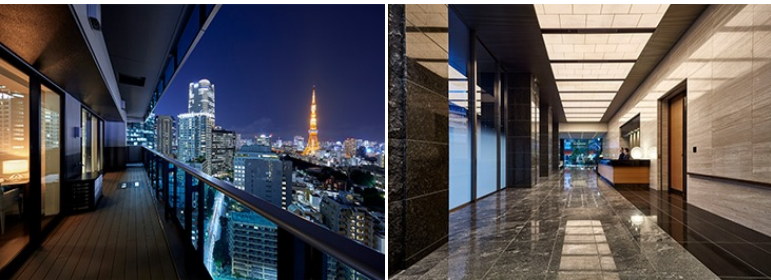


| | | | | | |
|---------------|-----------------------------------|----------|------|--------|--|
| Property Name | ROPPONGI GRAND TOWER RESIDENCE | Unit No. | TYPE | Access | Ropponngicchoume Station on Namboku Line (1 min) Ropponngi Station on Hibiya Line (7 min) Ropponngi Station on Oedo Line (7 min) |
| | | 1001 | Apt. | | |
| Address | 3-2-2, Roppongi, Minato-Ku, Tokyo | | | | |

Modern Luxury Tower Residence in Roppongi, near Akasaka



| Lease Conditions | | |
|------------------|--|-------------|
| LAYOUT | 1 BR | |
| SIZE | 50.47 m²/543.25 ft² | |
| RENT | JPY 470,000 / month | |
| Management Fee | - | |
| Deposit | 2 months | Key Money - |
| Lease Term | Fixed term lease for 36 months | |
| Available | Ask for Details | |
| Renewal Fee | - | |
| Agent Fee | 1 month + tax | |
| Other Info | Depreciation : 1 month / Guarantor Company : TBC / No Key Money / Auto lock / Air-Con / Separated Toilet / Balcony / Internet Included / Penalty Fee for Early Cancellation / CS/CATV / Floor Heating / Bathroom dryer / WIC | |

| Building Information | | | |
|----------------------|---|-----------------------|---------|
| Completion | Mar, 2016 | Earthquake Resistance | New |
| Structure | RC, 27 floors above and 2 basement floors | | |
| Car Parking | TBC | | |
| Bicycle Parking | TBC | | |
| Music Instrument | - | Pet | Allowed |
| Facilities | Motorcycle Parking (TBC) / Trunk Room (TBC) / Gym (TBC) / Within 20 min walk to Roppongi / Near Large Parks / Front desk / Concierge / Janitor / Delivery box / Elevator / Close to Station | | |

| Remarks |
|---|
| Renters Insurance : Required / Pet:additional deposit (1 month) |

*The actual Layout & Size may differ slightly from this floor plans & pictures.



HOUSEREP TOKYO INC.

ハウスレップトーキョー株式会社

#301, 1-4-15, Hiroo, Shibuya-ku, Tokyo 150-0012, Japan

+81 (0)3 6427 5860

inquiry@housserrep-tokyo.com

Transaction Type : Intermediate

Agent Fee : 1 month + tax

Website : www.housserrep-tokyo.com

