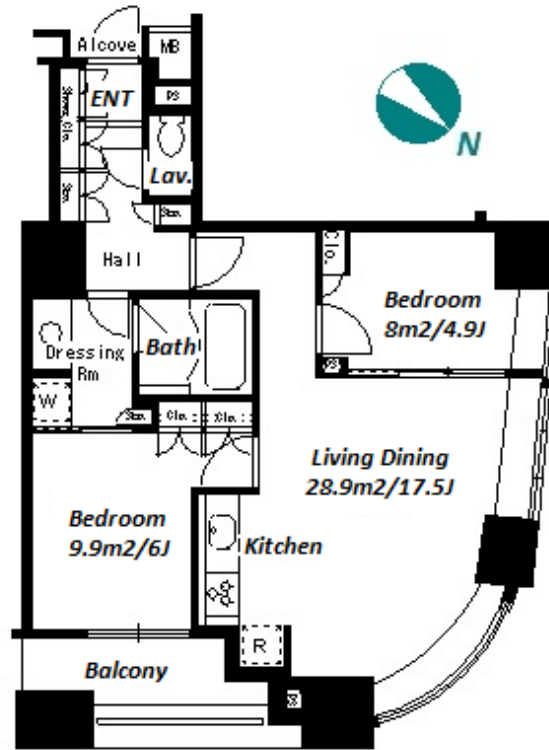


Property Name	PARK AXIS NIHONBASHI STAGE	Unit No.	TYPE	Access	Ninngyouchou Station on Hibiya Line (8 min) Hacchoubori Station on JR Keiyo Line (16 min)
		1111	Apt.		
Address	1-37-12, Nihombashikakigaracho, Chuo-Ku, Tokyo				

## Stylish Apt. in Nihonbashi, near Tokyo Sta. & Shopping Area



Lease Conditions			
LAYOUT	2 BR		
SIZE	64.05 m²/689.42 ft²		
RENT	JPY 299,000 / month		
Management Fee	-		
Deposit	2 months	Key Money	1 month
Lease Term	Standard lease for months		
Available	Early, Jun, 2024		
Renewal Fee	1 month		
Agent Fee	1 month + tax		
Other Info	Key Replacement Fee : JPY15,000 Tax not included / Auto lock / Air-Con / Separated Toilet / Balcony / Internet (Extra Charge) / Penalty Fee for Early Cancellation / Flooring / Bathroom dryer / Corner Unit		

Building Information			
Completion	Aug, 2004	Earthquake Resistance	New
Structure	RC, 14 floors above		
Car Parking	TBC		
Bicycle Parking	extra charge		
Music Instrument	-	Pet	-
Facilities	Motorcycle Parking (TBC) / Within 20 min to Tokyo station by car / Front desk / Janitor / Delivery box / Elevator / Security / 24h Garbage Drop-off		

Remarks
Bicycle parking : 2,000yen+tax for a bike sticker / Room cleaning JPY.64,050+tax at the end of tenancy

\*The actual Layout & Size may differ slightly from this floor plans & pictures.



# HOUSEREP TOKYO INC.

ハウスレップトーキョー株式会社

#301, 1-4-15, Hiroo, Shibuya-ku, Tokyo 150-0012, Japan

+81 (0)3 6427 5860

inquiry@housserrep-tokyo.com

Transaction Type : Intermediate

Agent Fee : 1 month + tax

Website : www.housserrep-tokyo.com

