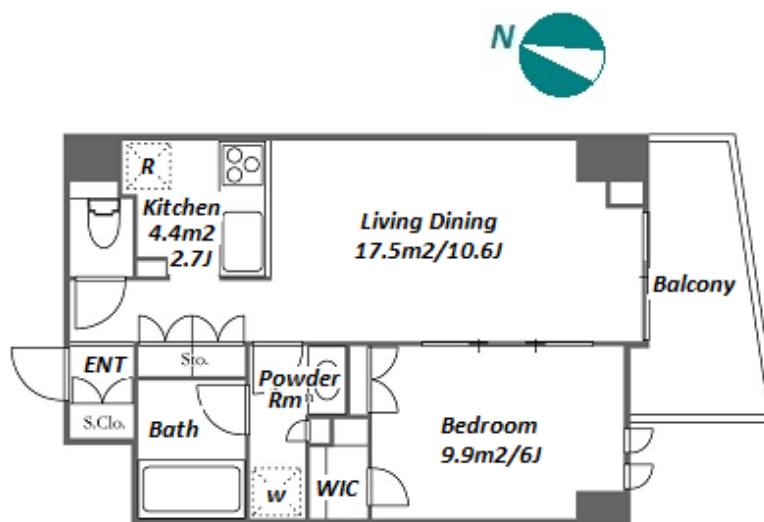
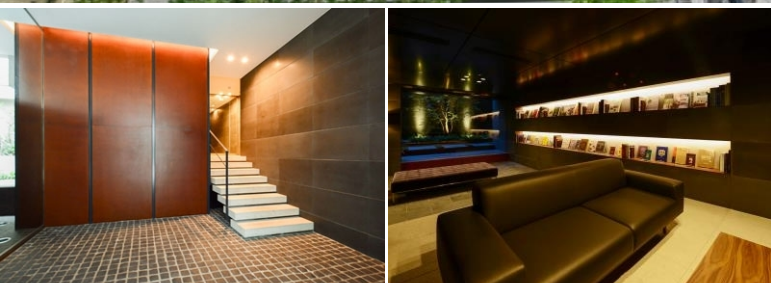


Property Name	KDX RESIDENCE EBISU	Unit No.	TYPE	Access	Ebisu Station on JR Yamanote Line (3 min) Daikanyama Station on Toyoko Line (10 min) Nakameguro Station on Hibiya Line (14 min)
		209	Apt.		
Address	1-11-16, Ebisuminami, Shibuya-Ku, Tokyo				

## Modern Stylish Apt. in Ebisu, near Daikanyama / Ebisu Garden Place



Lease Conditions			
LAYOUT	1 BR		
SIZE	48.11 m²/517.85 ft²		
RENT	JPY 276,000 / month		
Management Fee	JPY12,000/month		
Deposit	2 months	Key Money	1 month
Lease Term	Standard lease for 24 months		
Available	End, Aug, 2024		
Renewal Fee	1 month		
Agent Fee	1 month + tax		
Other Info	Key Replacement Fee : JPY18,000 Tax not included / Guarantor Company : TBC / Auto lock / Air-Con / Separated Toilet / Balcony / Internet Included / Musical Instrument Negotiable / CS/CATV / Flooring / Floor Heating / Bathroom dryer		

Building Information			
Completion	Oct, 2015	Earthquake Resistance	New
Structure	RC, 8 floors above		
Car Parking	TBC		
Bicycle Parking	TBC		
Music Instrument	Negotiable	Pet	N/A
Facilities	Within 20 min to Roppongi by train / Within 20 min to Tokyo station by car / Near Large Parks / Designer's / Delivery box / Elevator / Security / Close to Station		

\*The actual Layout & Size may differ slightly from this floor plans & pictures.



**HOUSEREP TOKYO INC.**

ハウスレップトーキョー株式会社

#301, 1-4-15, Hiroo, Shibuya-ku, Tokyo 150-0012, Japan

+81 (0)3 6427 5860

inquiry@housserrep-tokyo.com

Transaction Type : Intermediate

Agent Fee : 1 month + tax

Website : www.housserrep-tokyo.com



Remarks