

FOR RENT

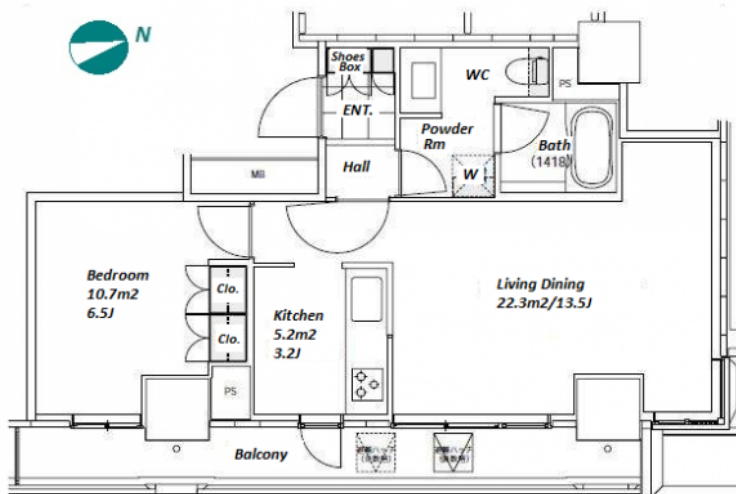
Property ID No. :114290

HOUSEREP TOKYO INC.

Website : www.housserrep-tokyo.com

Property Name	PARK CUBE ATAGOYAMA TOWER	Unit No.	TYPE	Access	Kamiyachou Station on Hibiya Line (7 min) Toranomom Hills Station on Ginza Line (8 min)
		1905	Apt.		
Address	3-17-7, Nishishimbashi, Minato-Ku, Tokyo				

High Rise Apt in Onarimon, near "Tokyo Tower" & "Toranomon Hills"



Lease Conditions			
LAYOUT	1 BR		
SIZE	51.15 m²/550.57 ft²		
RENT	JPY 305,000 / month		
Management Fee	-		
Deposit	2 months	Key Money	1 month
Lease Term	Standard lease for 24 months		
Available	End, May, 2024		
Renewal Fee	1 month		
Agent Fee	1 month + tax		
Other Info	Key Replacement Fee : JPY15,000 Tax not included / Guarantor Company : Available / Auto lock / Air-Con / Separated Toilet / Balcony / Penalty Fee for Early Cancellation / Nice Views / CS/CATV / Flooring / Bathroom dryer / Corner Unit		
Building Information			
Completion	Feb, 2007	Earthquake Resistance	New
Structure	RC, 31 story		
Car Parking	JPY45,000/ month		
Bicycle Parking	TBC		
Music Instrument	-	Pet	Allowed
Facilities	Motorcycle Parking (TBC) / Within 20 min to Roppongi by train / Within 20 min to Tokyo station by car / Near Large Parks / Front desk / Delivery box / Elevator / High-rise		

\*The actual Layout & Size may differ slightly from this floor plans & pictures.



HOUSEREP TOKYO INC.

ハウスレップトーキョー株式会社

#301, 1-4-15, Hiroo, Shibuya-ku, Tokyo 150-0012, Japan

+81 (0)3 6427 5860

inquiry@housserrep-tokyo.com

Transaction Type : Intermediate

Agent Fee : 1 month + tax

Website : www.housserrep-tokyo.com



Remarks
Renters Insurance : Required / Pet:additional deposit ( 1 month ) / Pet :additional 1 month for deposit( a small dog or a cat only)