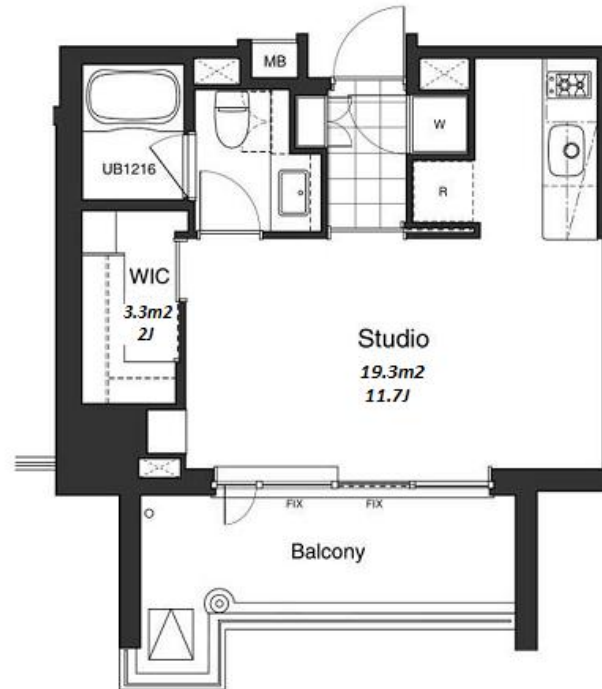
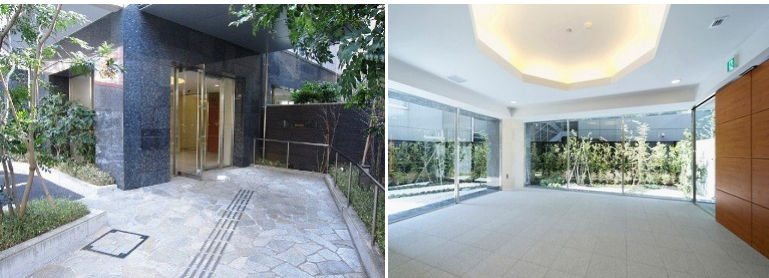


Property Name	APARTMENTS TOWER ROPPONGI	Unit No.	TYPE	Access	Roppongi Station on Namboku Line (2 min) Roppongi Station on Hibiya Line (7 min) Roppongi Station on Oedo Line (7 min)
	Address	3-3-10, Roppongi, Minato-Ku, Tokyo	501		

Stylish Apt. in Roppongi, near Roppongi / Azabujuban



Lease Conditions		
LAYOUT	Studio	
SIZE	31.9 m ² /343.36 ft ²	
RENT	JPY 155,000 / month	
Management Fee	JPY8,000/month	
Deposit	2 months	Key Money 1 month
Lease Term	Fixed term lease for 24 months	
Available	End, Jul, 2024	
Renewal Fee	-	
Agent Fee	1 month + tax	
Other Info	Key Replacement Fee : JPY20,000 Tax not included / Auto lock / Air-Con / Separated Toilet / Balcony / Internet Included / Flooring / WIC	

Building Information		
Completion	Apr, 2007	Earthquake Resistance New
Structure	RC, 18 floors above	
Car Parking	TBC	
Bicycle Parking	N/A	
Music Instrument	-	Pet -
Facilities	Motorcycle Parking (TBC) / Delivery box	

Remarks

*The actual Layout & Size may differ slightly from this floor plans & pictures.



HOUSEREP TOKYO INC.

ハウスレップト-キョ-株式会社

#301, 1-4-15, Hiroo, Shibuya-ku, Tokyo 150-0012, Japan

+81 (0)3 6427 5860

inquiry@housserep-tokyo.com

Transaction Type : Intermediate

Agent Fee : 1 month + tax

Website : www.housserep-tokyo.com

