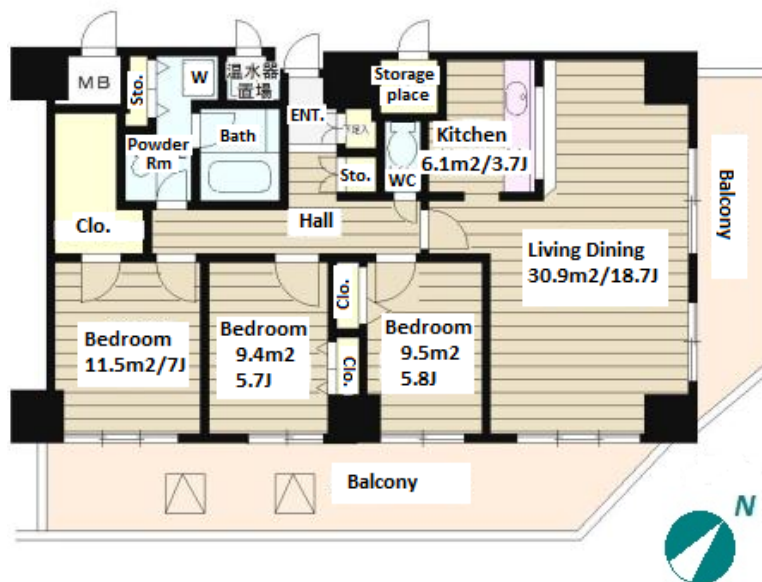
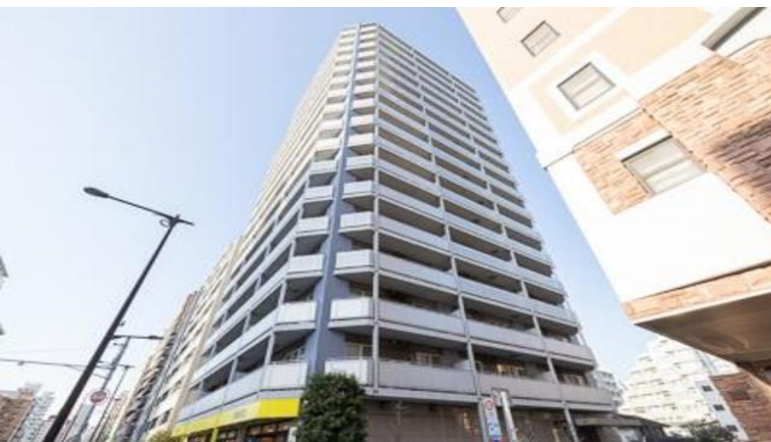


Property Name	TRESTAGE MEGURO	Unit No.	TYPE	Access	Meguro Station on JR Yamanote Line (9 min) Fudoumae Station on Tokyu Meguro Line (10 min)
		1701	Apt.		
Address	2-22-11, Shimomeguro, Meguro-Ku, Tokyo				

High-rise Apt. in Meguro, along Yamate Street



Lease Conditions	
LAYOUT	3 BR
SIZE	100.15 m²/1078 ft²
RENT	JPY 406,000 / month
Management Fee	-
Deposit	2 months
Key Money	1 month
Lease Term	Standard lease for 24 months
Available	End, Sep, 2024
Renewal Fee	1 month
Agent Fee	1 month + tax
Other Info	Key Replacement Fee : JPY20,000 Tax not included / Guarantor Company : TBC / Auto lock / Air-Con / Separated Toilet / Balcony / Musical Instrument Negotiable / CS/CATV / Flooring / IH Stoves / Bathroom dryer / WIC / Corner Unit

Building Information	
Completion	Feb, 2004
Earthquake Resistance	New
Structure	RC, 18 floors above and 2 basement floors
Car Parking	N/A
Bicycle Parking	for 1 space (Included)
Music Instrument	Negotiable
Pet	-
Facilities	Motorcycle Parking (TBC) / Trunk Room ((Included)) / Janitor / Delivery box / Elevator / High-rise

Remarks
Renters Insurance : Required

*The actual Layout & Size may differ slightly from this floor plans & pictures.



HOUSEREP TOKYO INC.

ハウスレップトーキョー株式会社

#301, 1-4-15, Hiroo, Shibuya-ku, Tokyo 150-0012, Japan

+81 (0)3 6427 5860

inquiry@housserrep-tokyo.com

Transaction Type : Intermediate

Agent Fee : 1 month + tax

Website : www.housserrep-tokyo.com

